

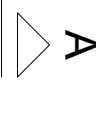
- [illegible]


RESPONSÁVEL SECURITS		RESPONSÁVEL TÉCNICO	
LOCAL:	FASE:	ESCALA:	
CHAPEADO - SC	EXECUTIVO	1:50	
OBRA:	REVISÃO Nº:	TAMANHO FOLHA:	
CENTRO DE ACOPLHIMENTO	R00	1470 X 508	
PROJETO:	DATA:	Nº PRANCHA:	
ESTRUTURAL	07/10/2025	EST 01	
CONTEÚDO:	DESENHADO POR:	14	
PLANTA DE LOCAÇÃO	RODRIGO		
ENDEREÇO:	NOME DO ARQUIVO:		
BDQDVAS-SC 484 KM.02 FRENTEIRA SUL			









Legenda das vigas e paredes	
	Viga

- PAREDES, PILARES E FACES LATERAIS DE VIGAS: 3 DIAS
- LAJES DE ATÉ 10CM DE ESPESSURA: 7 DIAS
- FACES INFERIORES DE VIGAS COM REESCORAMENTO: 14 DIAS
- LAJES COM MAIS DE 10CM DE ESPESSURA E FACES INFERIORES DAS VIGAS COM MENOS DE 10M DE VÃO: 21 DIAS
- ARCOS E FACES INFERIORES DE VIGAS COM MAIS DE 10M DE VÃO: 28 DIAS



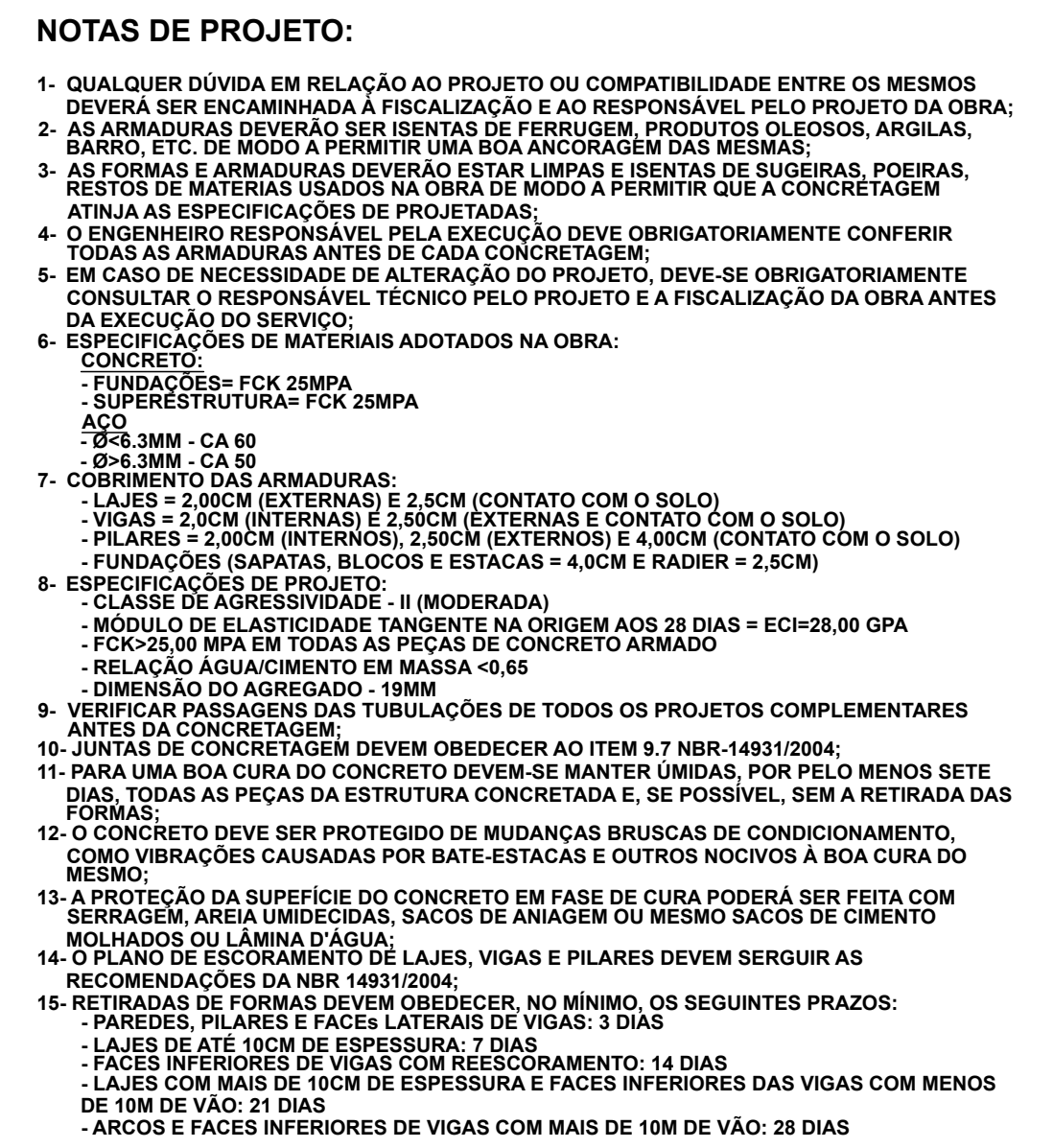


**Detalhe 2 (esc. 1:30)**

10 30 10 4 8

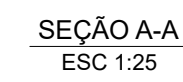
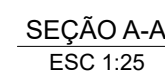
[illegible]







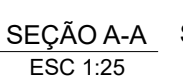
V1  
ESC 1:50



Resumo do aço

DIAM	C.TOTAL	PES
10	10	10
12	12	12
14	14	14
16	16	16
18	18	18
20	20	20
22	22	22
24	24	24
26	26	26
28	28	28
30	30	30
32	32	32
34	34	34
36	36	36
38	38	38
40	40	40
42	42	42
44	44	44
46	46	46
48	48	48
50	50	50
52	52	52
54	54	54
56	56	56
58	58	58
60	60	60
62	62	62
64	64	64
66	66	66
68	68	68
70	70	70
72	72	72
74	74	74
76	76	76
78	78	78
80	80	80
82	82	82
84	84	84
86	86	86
88	88	88
90	90	90
92	92	92
94	94	94
96	96	96
98	98	98
100	100	100

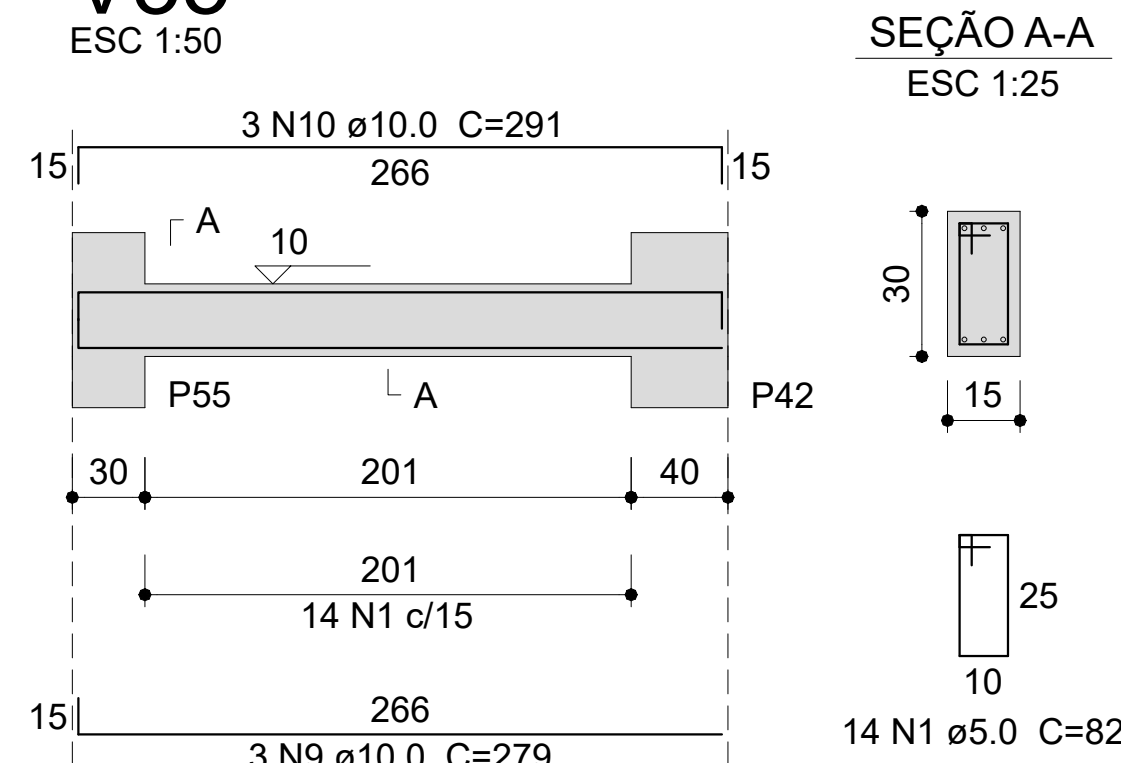
Volume de concreto (C-25) = 8.84 m<sup>3</sup>  
Área de forma = 153.7 m<sup>2</sup>





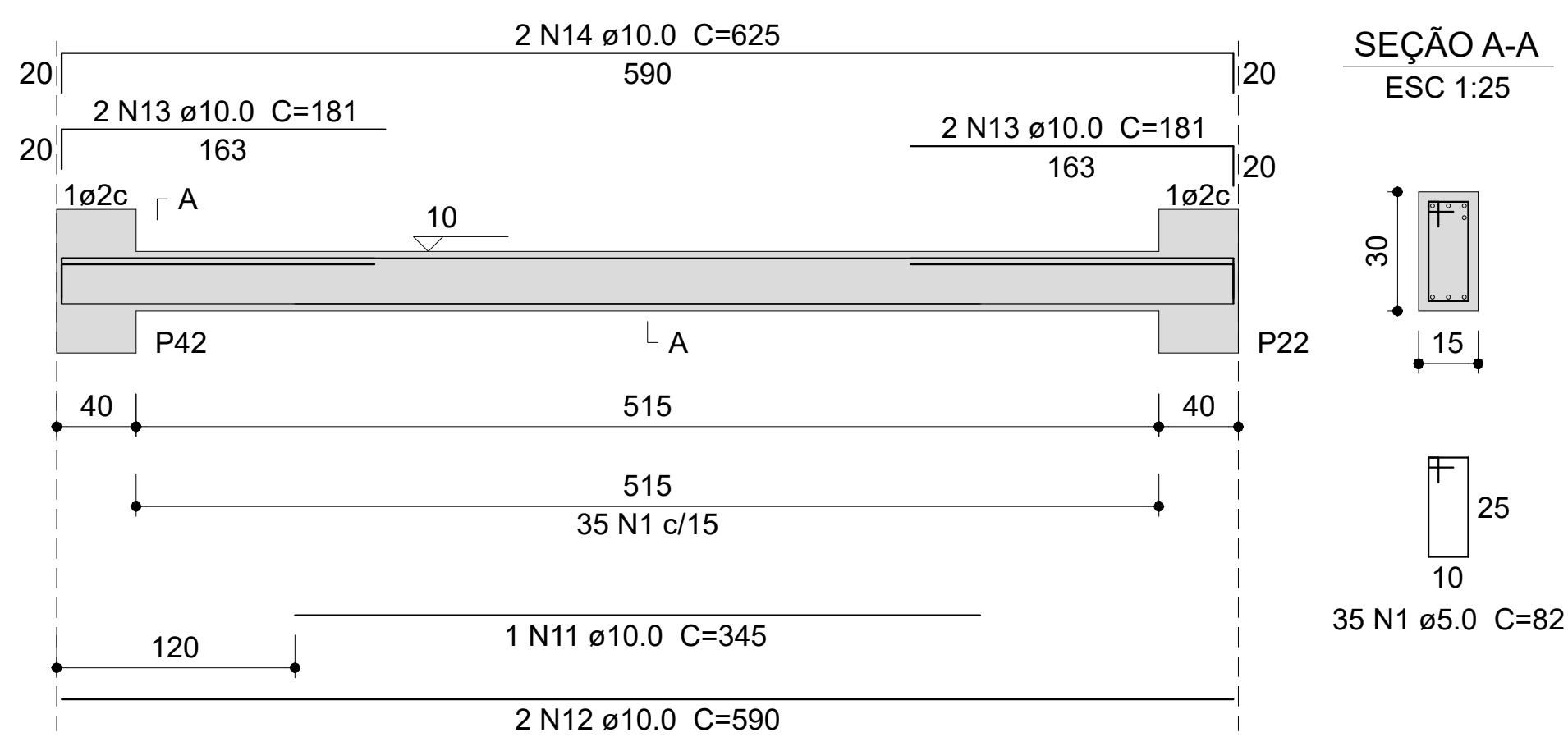
# V35

ESC 1:50



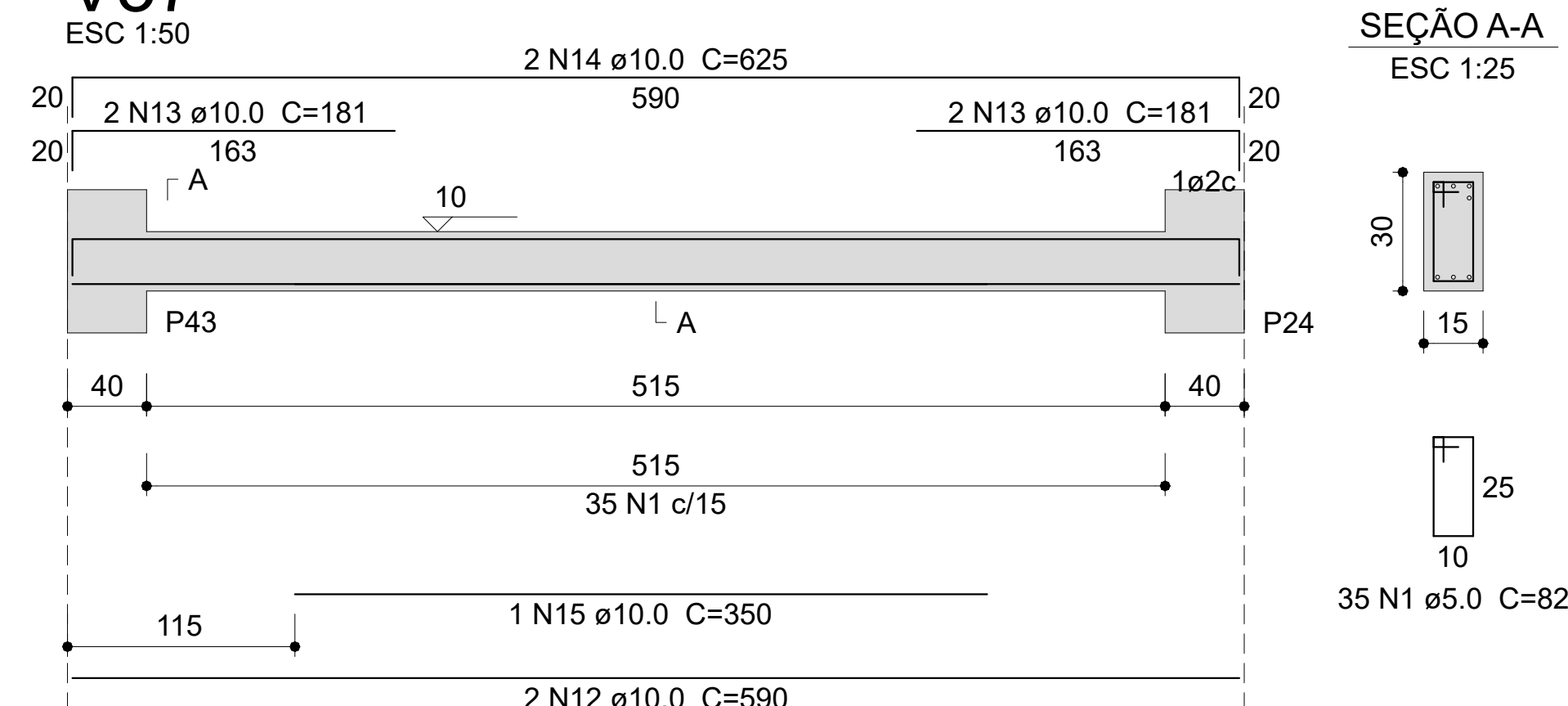
## V36

ESC 1:50



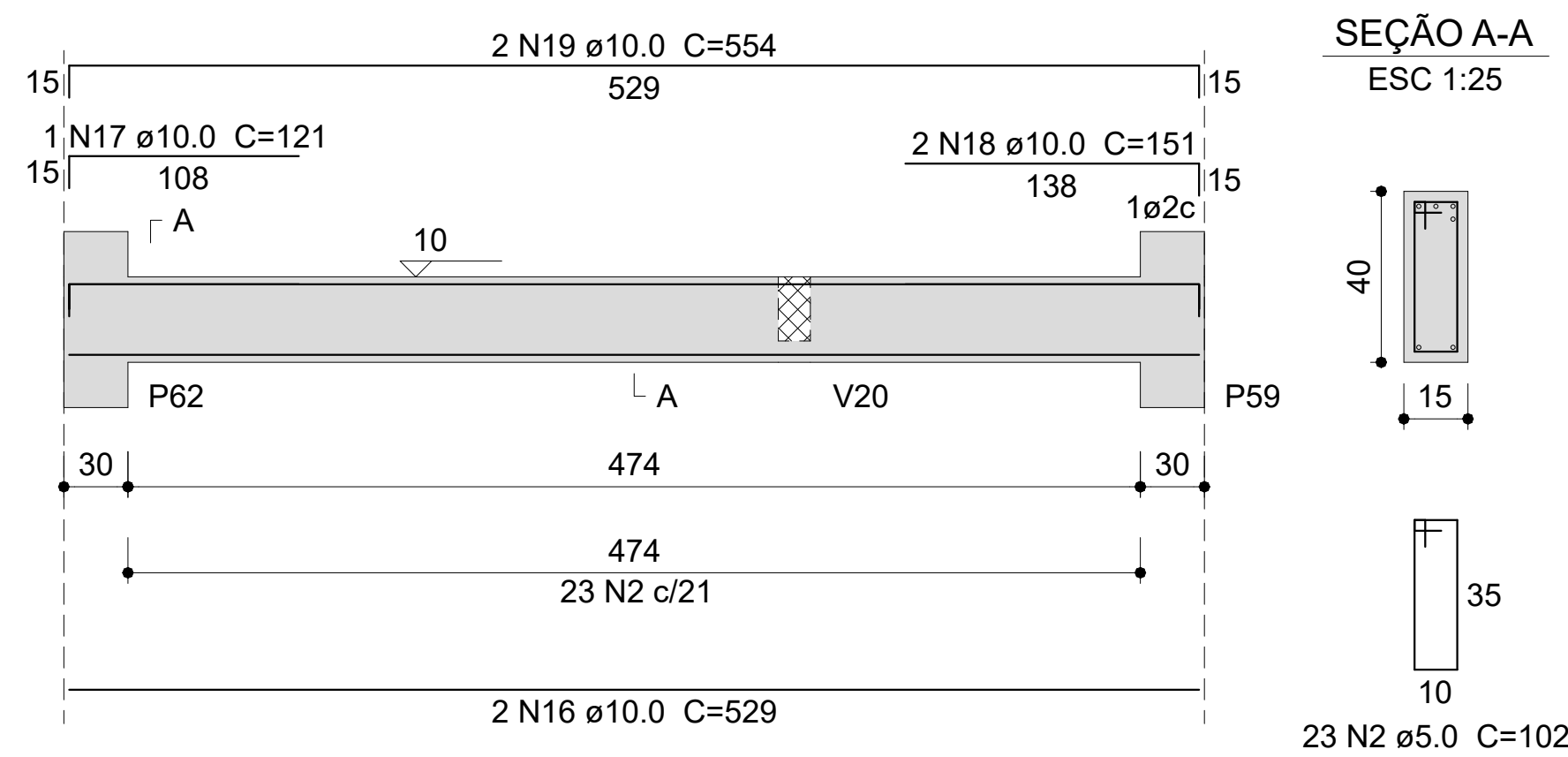
## V37

ESC 1:50



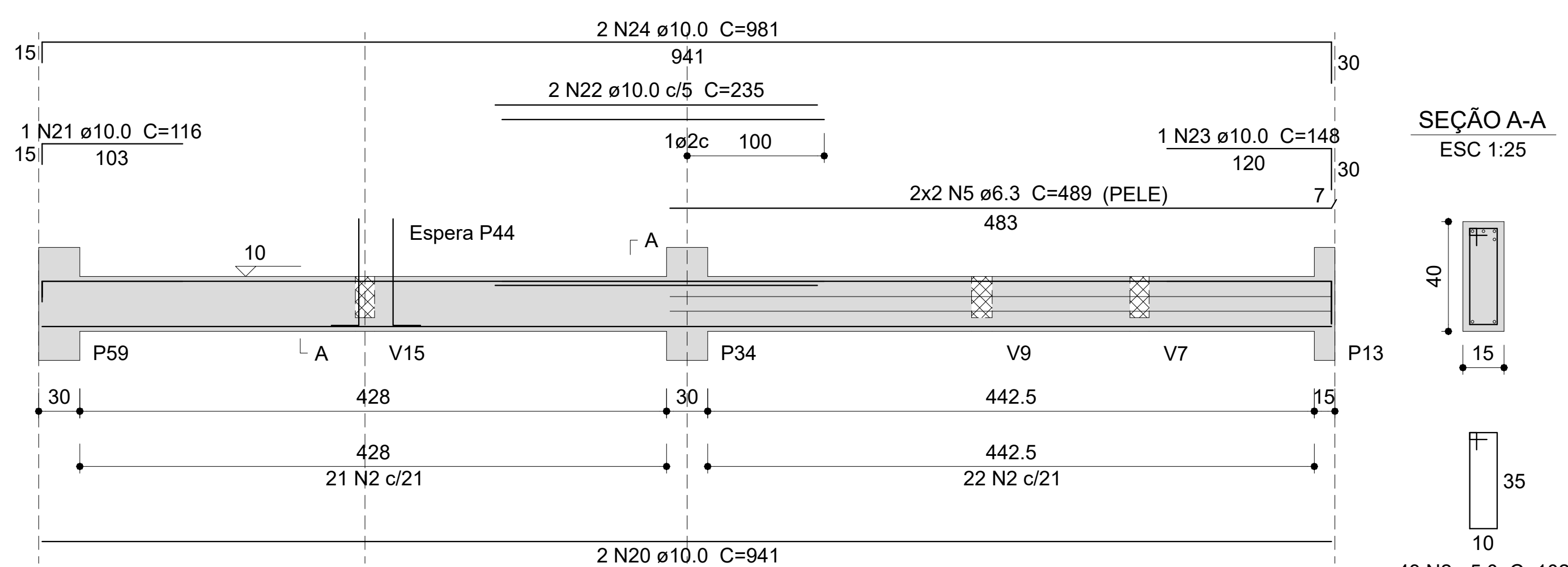
## V38

ESC 1:50



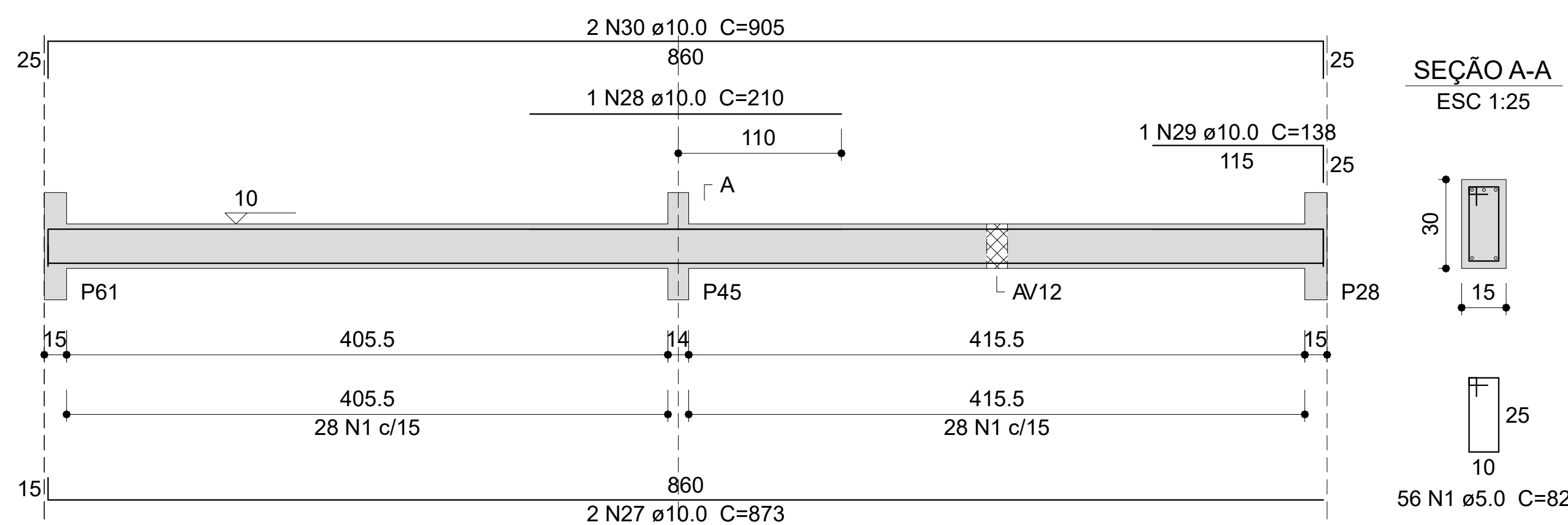
## V39

ESC 1:50



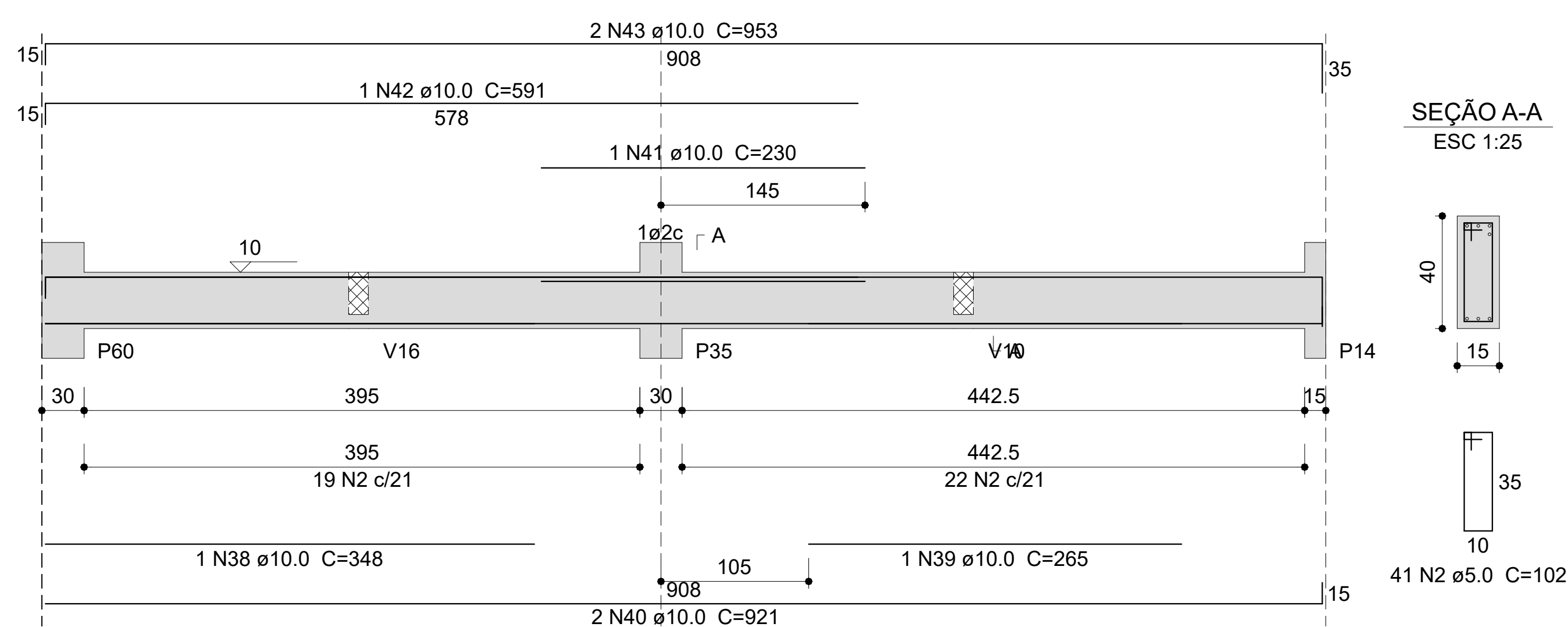
## V41

ESC 1:50



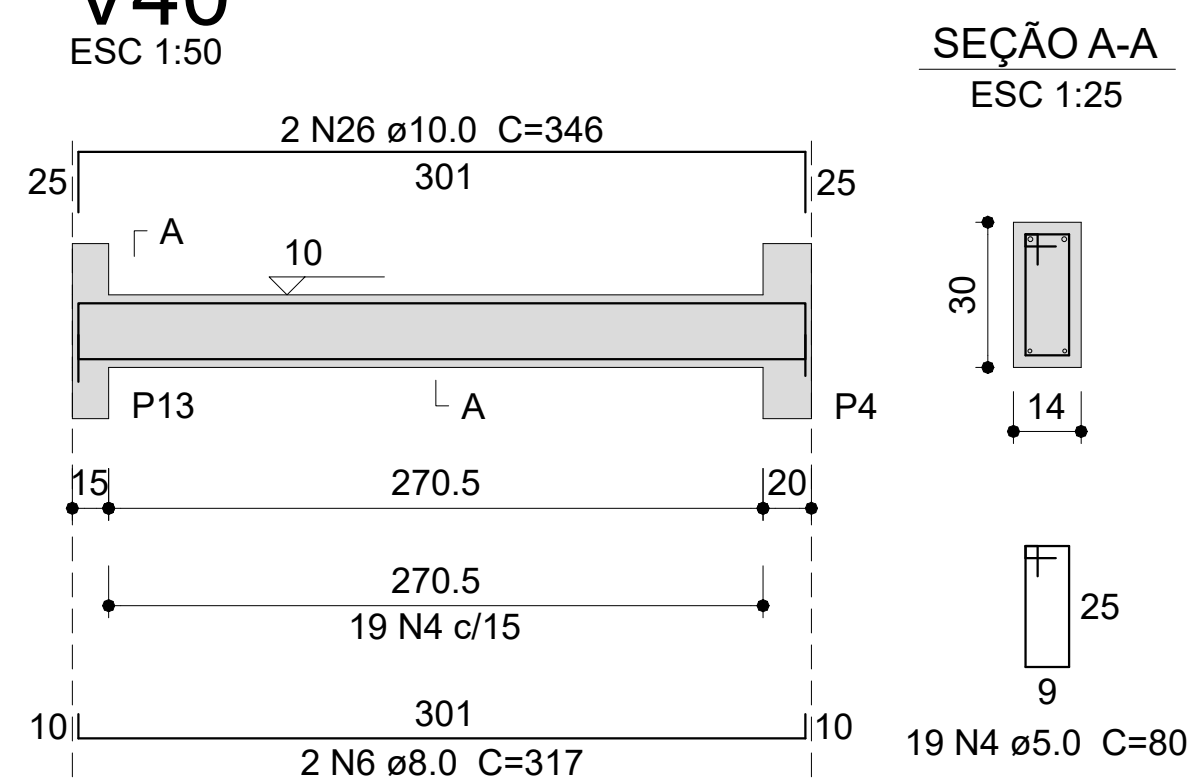
## V43

ESC 1:50



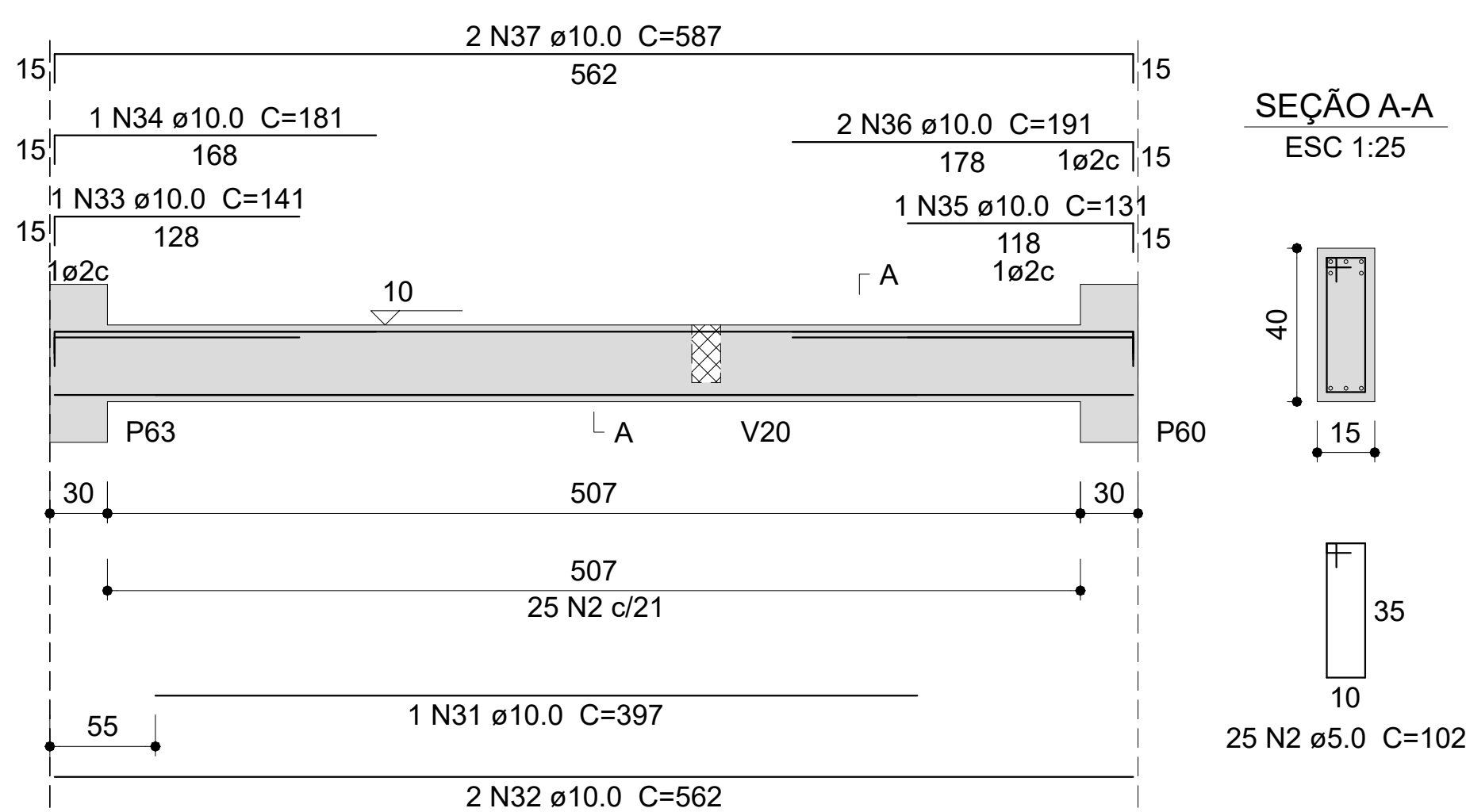
# V40

ESC 1:50



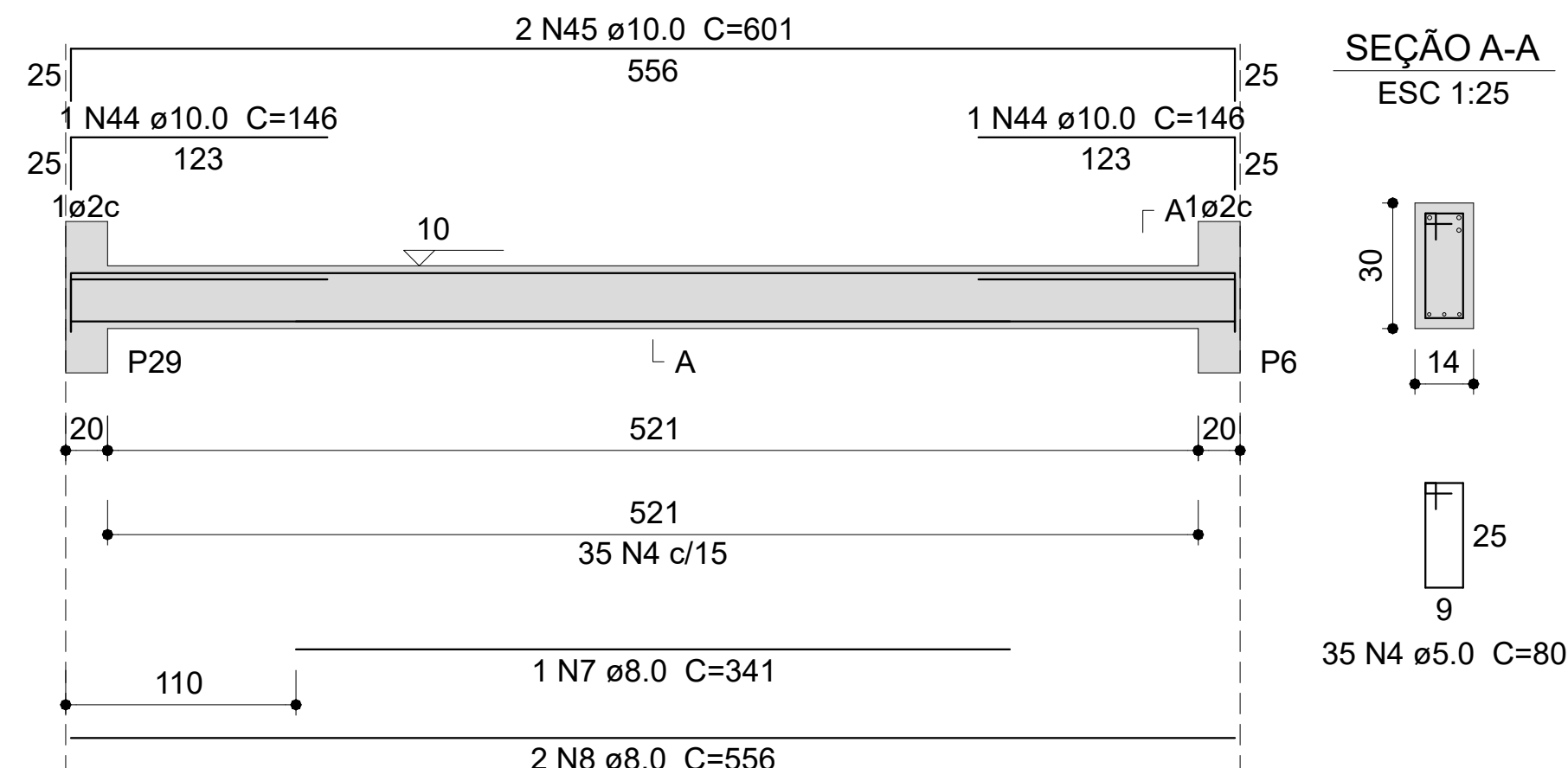
## V42

ESC 1:50



## V44

ESC 1:50



Relação do aço

V35		V36		V37	
V38		V39		V40	
V41		V42		V43	
V44					

AÇO	N	DIAM (mm)	QUANT	C.UNIT (cm)	C.TOTAL (cm)
CA60	1	5.0	144	82	11808
	2	5.0	132	102	13464
	3	5.0	4	25	100
CA50	4	5.0	54	80	4320
	5	6.3	4	489	1956
	6	8.0	2	317	634
	7	8.0	1	341	341
	8	8.0	2	556	1112
	9	10.0	3	279	837
	10	10.0	3	291	873
	11	10.0	1	345	345
	12	10.0	4	590	2360
	13	10.0	8	181	1448
	14	10.0	4	625	2500
	15	10.0	1	350	350
	16	10.0	2	529	1058
	17	10.0	1	121	121
	18	10.0	2	151	302
	19	10.0	2	554	1108
	20	10.0	2	941	1882
	21	10.0	1	116	116
	22	10.0	2	235	470
	23	10.0	1	148	148
	24	10.0	2	981	1962
	25	10.0	8	96	768
	26	10.0	2	346	692
27	10.0	2	873	1746	
28	10.0	1	210	210	
29	10.0	1	138	138	
30	10.0	2	905	1810	
31	10.0	1	397	397	
32	10.0	2	562	1124	
33	10.0	1	141	141	
34	10.0	1	181	181	
35	10.0	1	131	131	
36	10.0	2	191	382	
37	10.0	2	587	1174	
38	10.0	1	348	348	
39	10.0	1	265	265	
40	10.0	2	921	1842	
41	10.0	1	230	230	
42	10.0	1	591	591	
43	10.0	2	953	1906	
44	10.0	2	146	292	
45	10.0	2	601	1202	

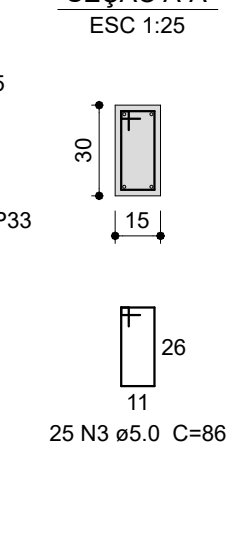
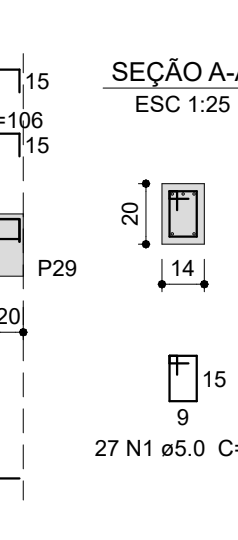
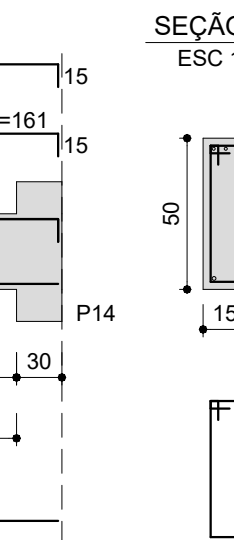
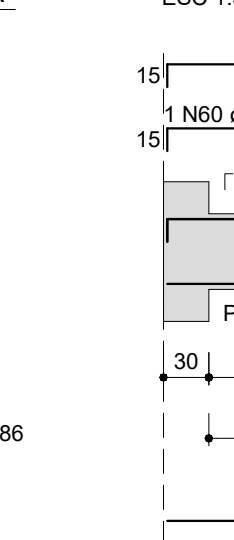
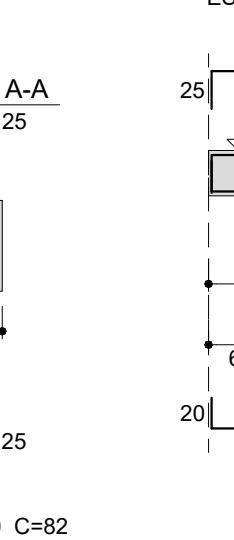
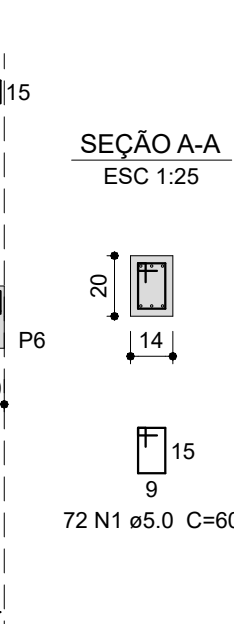
AÇO	DIAM (mm)	C.TOTAL (m)	PESO + 10 % (kg)
CA50	6.3	19.6	5.3
	8.0	20.9	9.1
	10.0	314.5	213.3
CA60	5.0	297	50.3
PESO TOTAL (kg)			
CA50	227.6		
CA60	50.3		

Volume de concreto (C-25) = 3.19 m<sup>3</sup>  
Área de forma = 51.97 m<sup>2</sup>

 <b>UNIVERSIDADE FEDERAL DA FRONTEIRA SUL</b>	<b>Secretaria Especial de Obras</b>	 <b>NOVO PAC</b> DESENVOLVIMENTO SUSTENTÁVEL
Rua São João, 300 - Centro - Fone: (41) 3442-1000 Rua São João, 300 - Centro - Fone: (41) 3442-1000	Rua São João, 300 - Centro - Fone: (41) 3442-1000	
<b>SECRETARIA ESPECIAL DE OBRAS</b> DESENVOLVIMENTO SUSTENTÁVEL	Rua São João, 300 - Centro - Fone: (41) 3442-1000	
<b>COORDENADOR DE OBRAS:</b> CÍRCULO LINGUAGIO	Rua São João, 300 - Centro - Fone: (41) 3442-1000	
PROJETO: CÍRCULO LINGUAGIO CÍRCULO LINGUAGIO	Rua São João, 300 - Centro - Fone: (41) 3442-1000	
PROJETO: CÍRCULO LINGUAGIO CÍRCULO LINGUAGIO	Rua São João, 300 - Centro - Fone: (41) 3442-1000	<b>ELABORAR TÉCNICA DE OBRAS:</b> PROJETO: CÍRCULO LINGUAGIO CÍRCULO LINGUAGIO



V1  
ESC 1:50

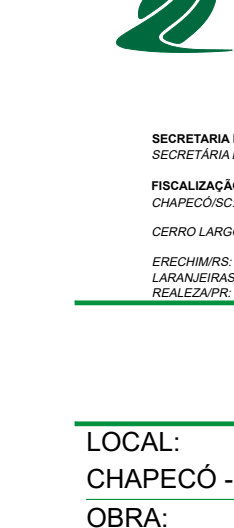
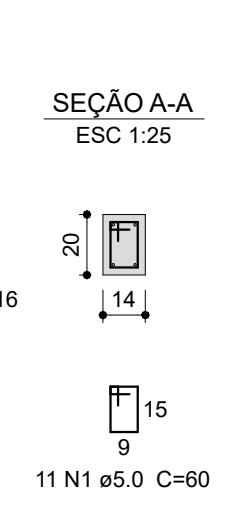
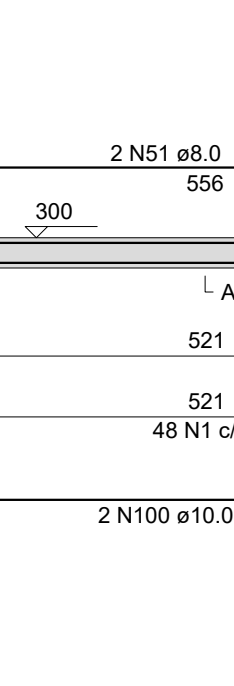
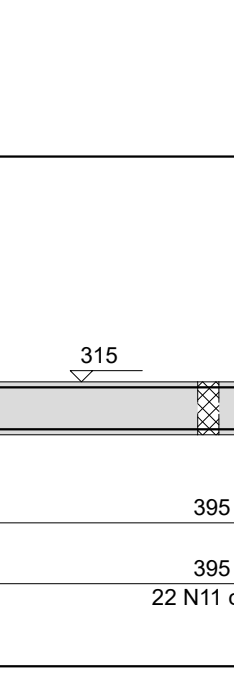
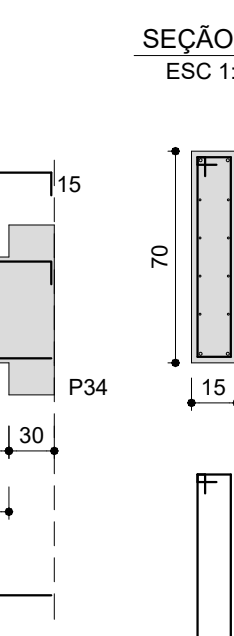
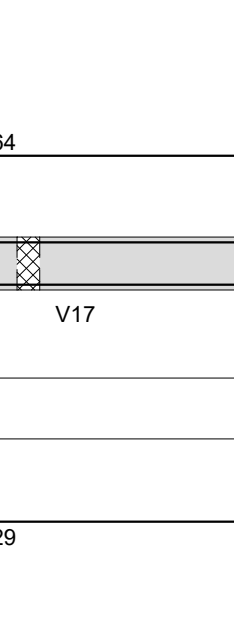
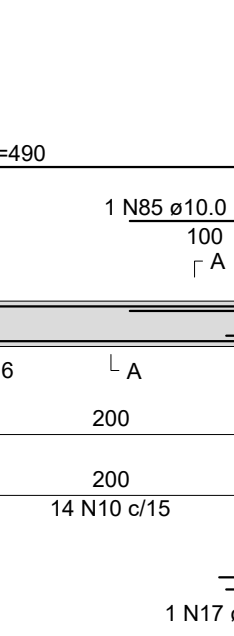
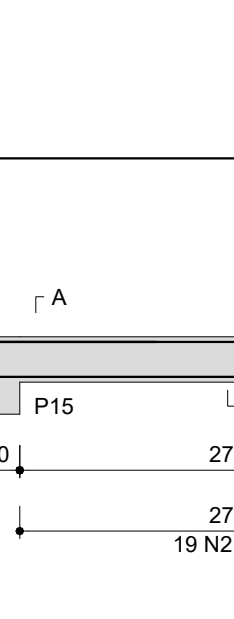
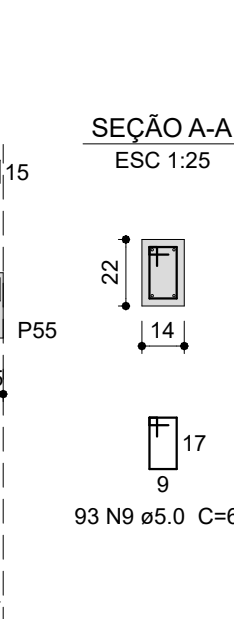
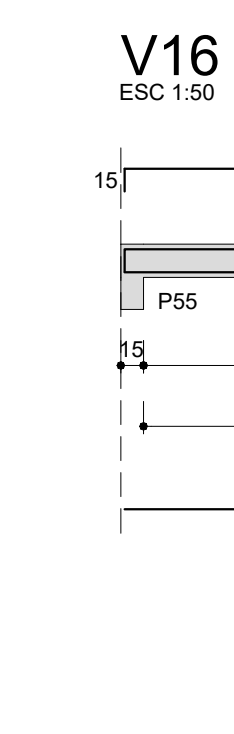
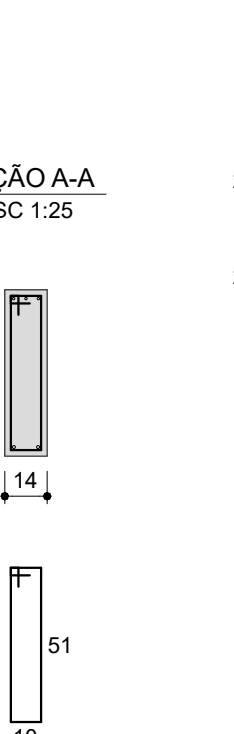
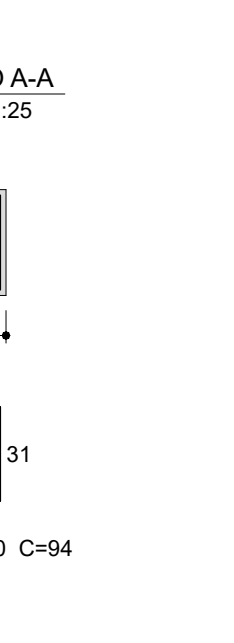
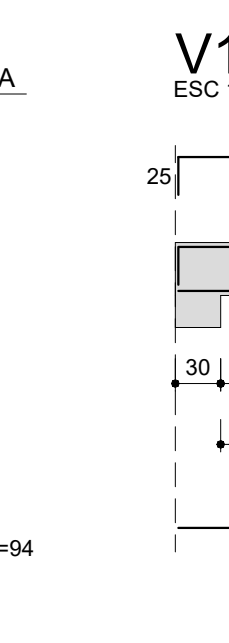
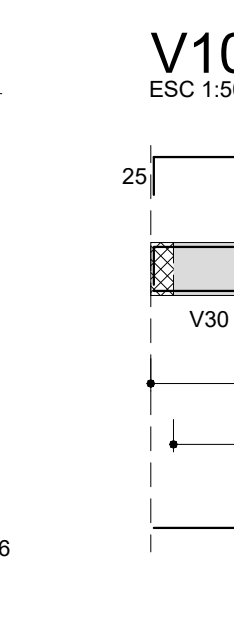
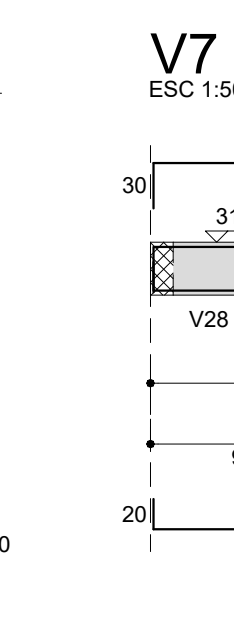
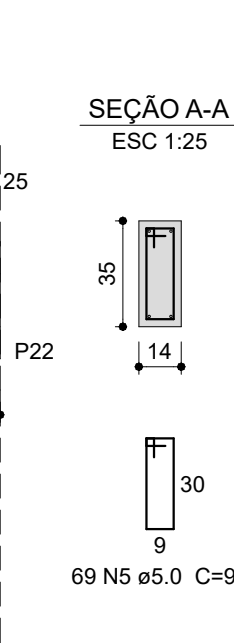


V1	V2	V3
V4	V5	V6
V7	V8	V9
V10	V11	V12
V13	V14	V15
V16	V17	V18
V19	V20	V21
V22	V23	V24
V25	V26	V27
V28	V29	V30
V31	V32	V33
V34	V35	V36

### Resumo do aço

AÇO	DIAM (mm)	C.TOTAL (m)	PESO + 10 % (kg)
CA50	6.3	33.9	9.1
	8.0	362.1	157.1
	10.0	423	286.8
	12.5	130.3	138.1
CA60	5.0	1018.6	172.7
PESO TOTAL (kg)			

Volume de concreto (C-25) = 10.1 m<sup>3</sup>  
Área de forma = 169.26 m<sup>2</sup>





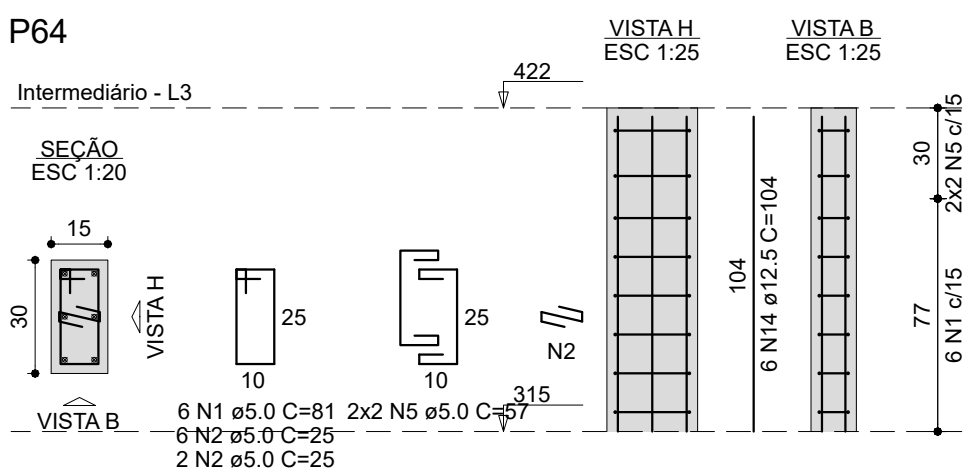
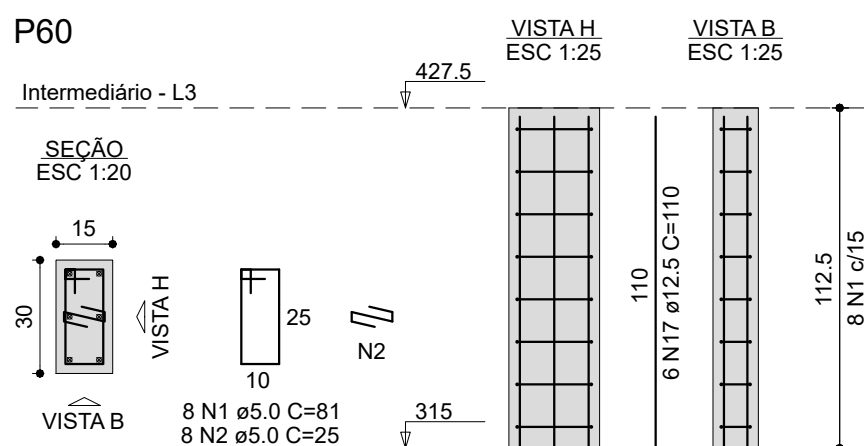
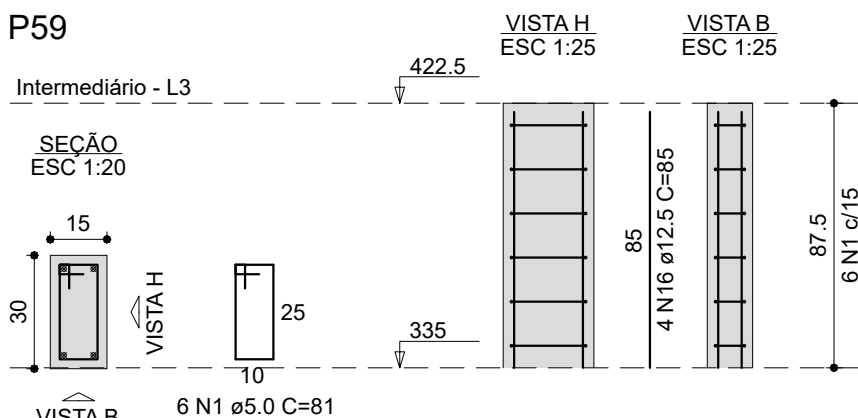
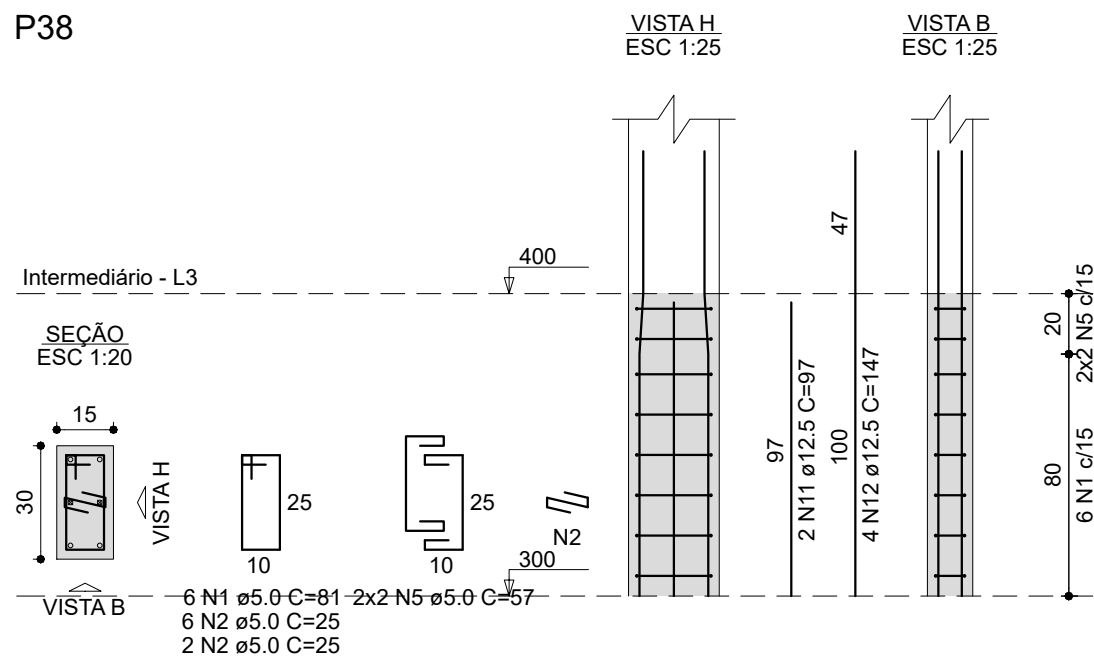
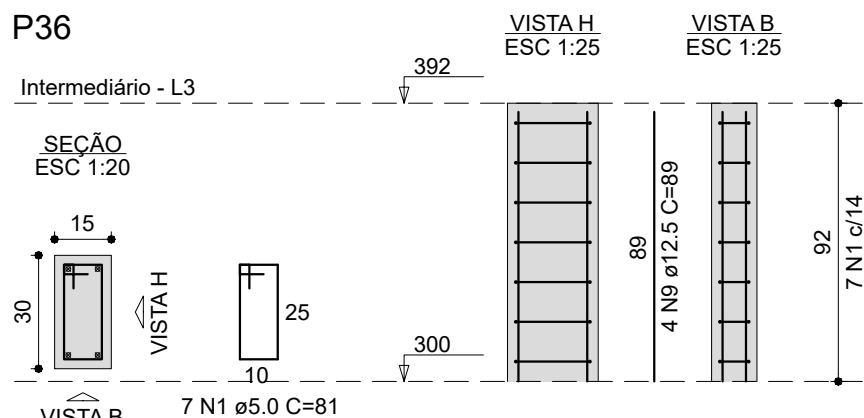
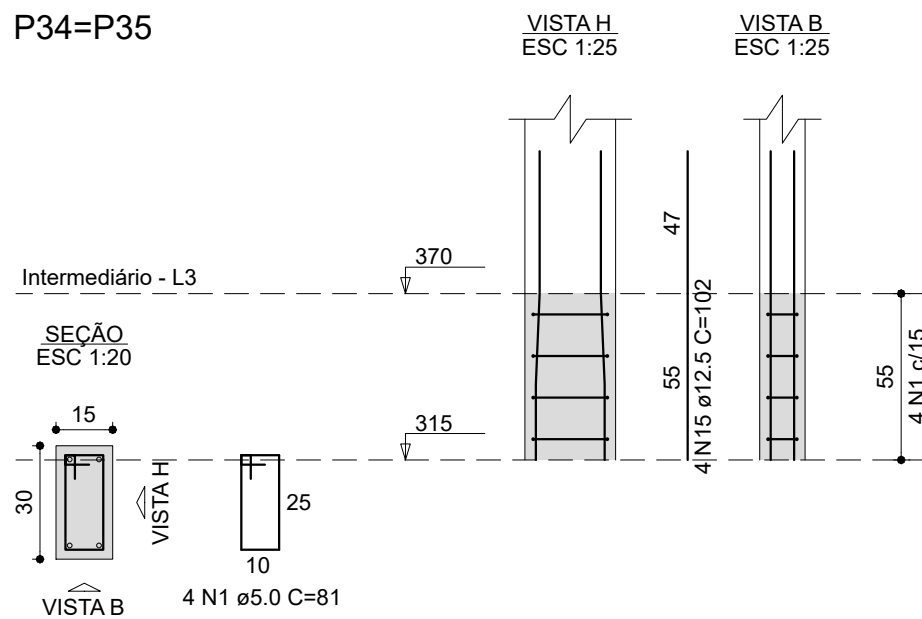
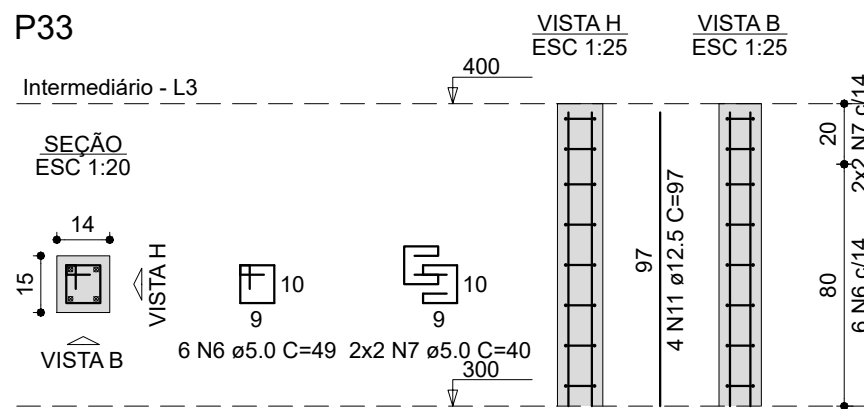
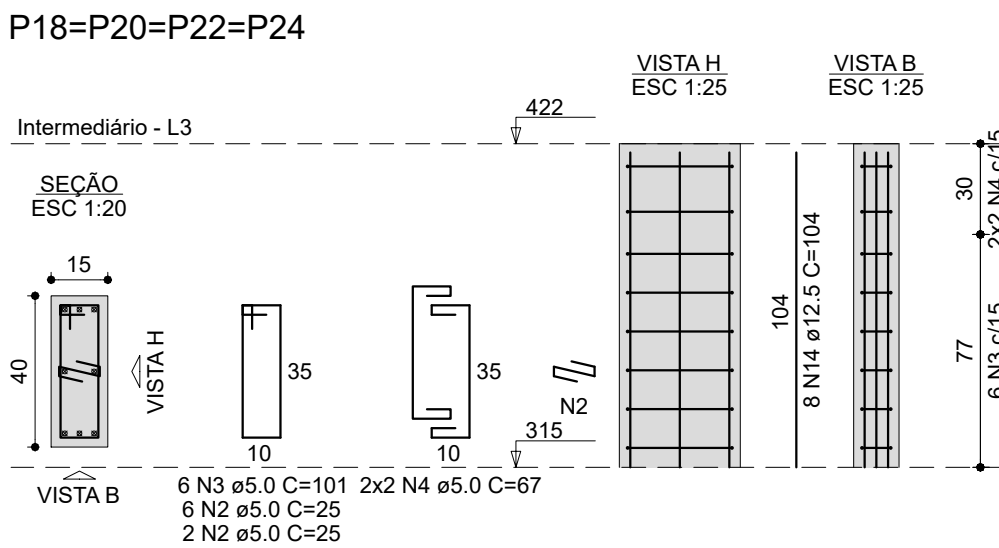
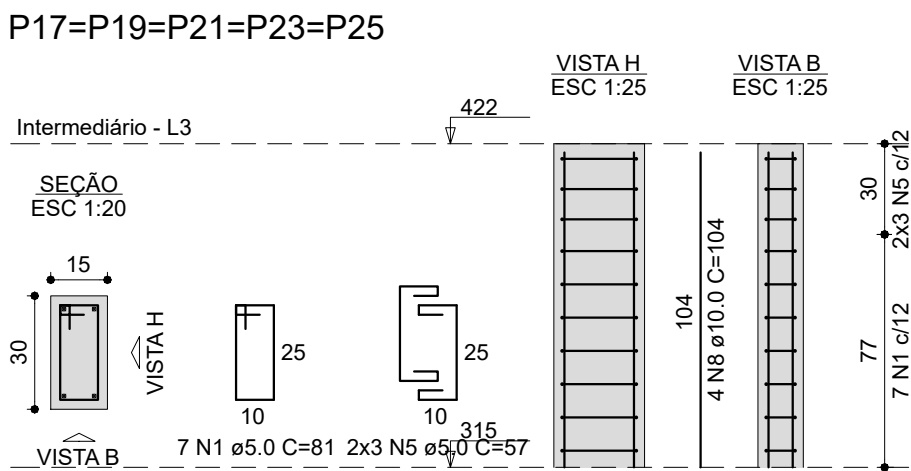
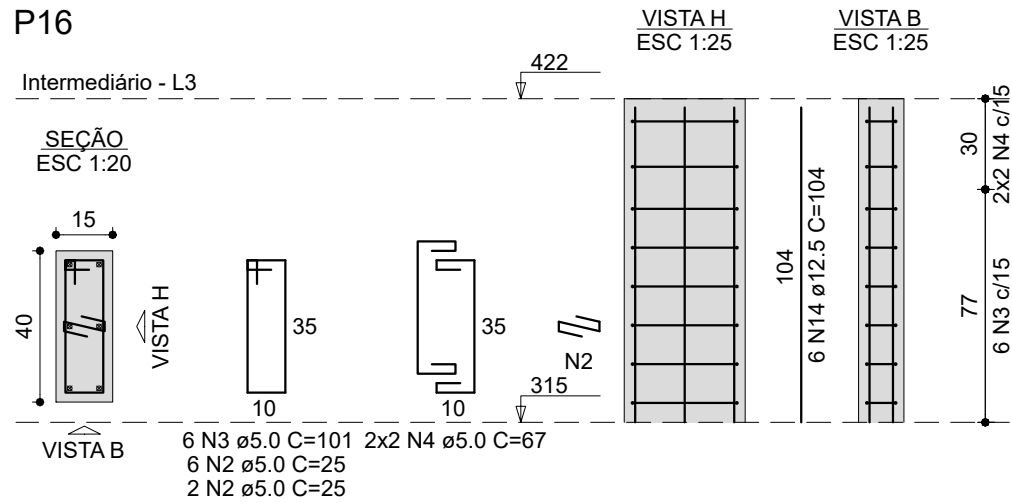
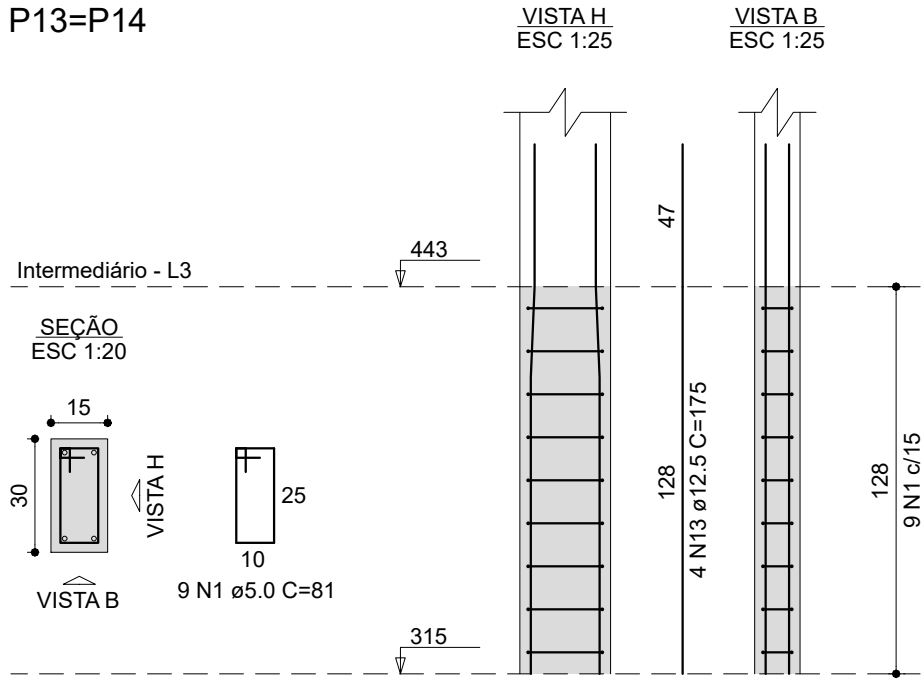
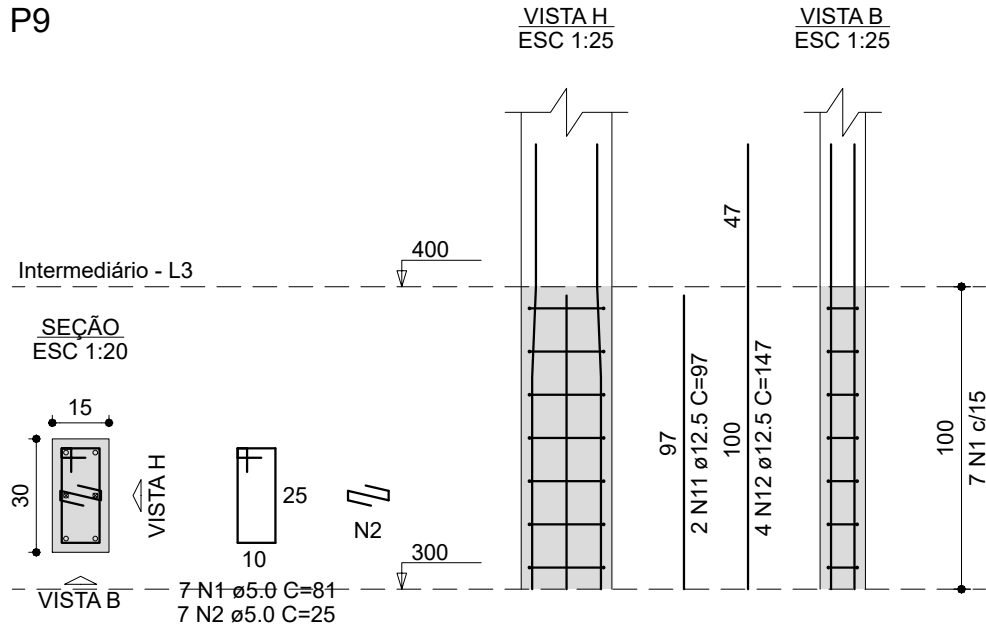
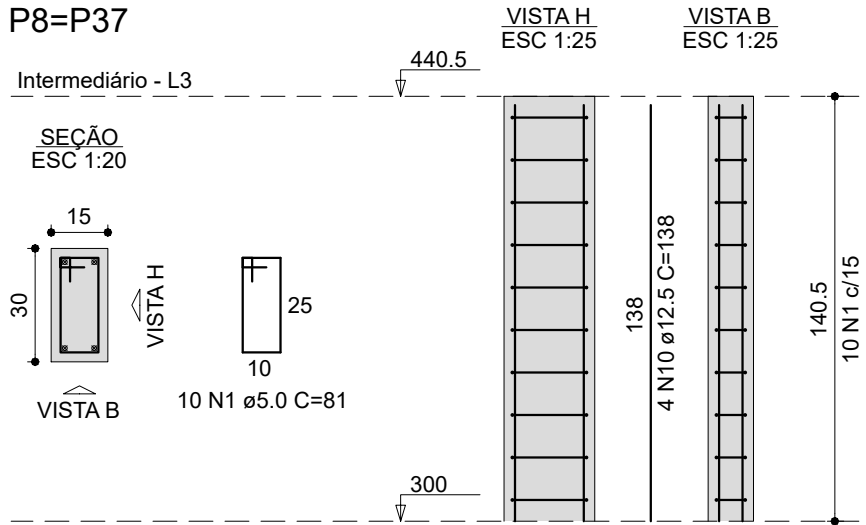
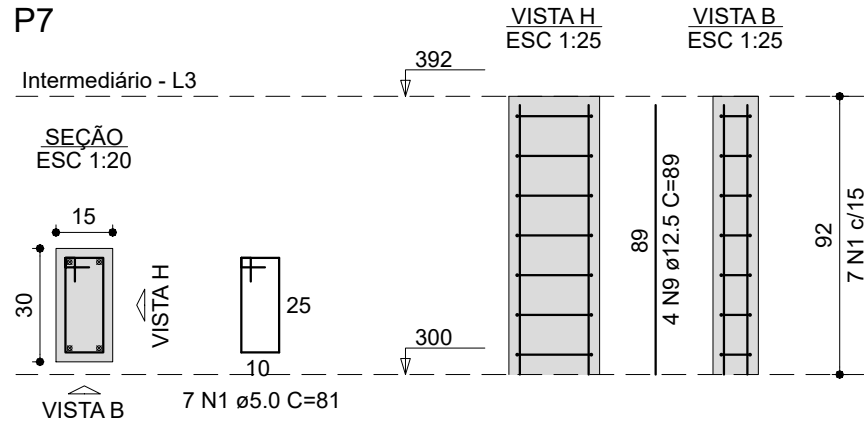








DETALHE - PILARES INTERMEDIÁRIO



RELAÇÃO DO AÇO

AÇO	N	DIAM (mm)	QUANT	C.UNIT (cm)	C.TOTAL (cm)
CA60	1	5.0	128	81	10368
	2	5.0	71	25	1775
	3	5.0	30	101	3030
	4	5.0	20	67	1340
	5	5.0	38	57	2166
CA50	6	5.0	6	49	294
	7	5.0	4	40	160
	8	10.0	20	104	2080
	9	12.5	8	89	712
	10	12.5	8	138	1104
	11	12.5	8	97	776
	12	12.5	8	147	1176
	13	12.5	8	175	1400
	14	12.5	44	104	4576
	15	12.5	8	102	816
	16	12.5	4	85	340
	17	12.5	6	110	660

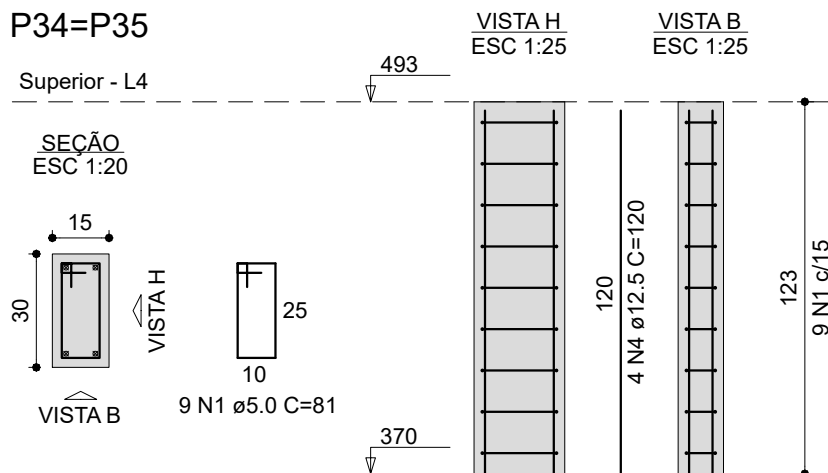
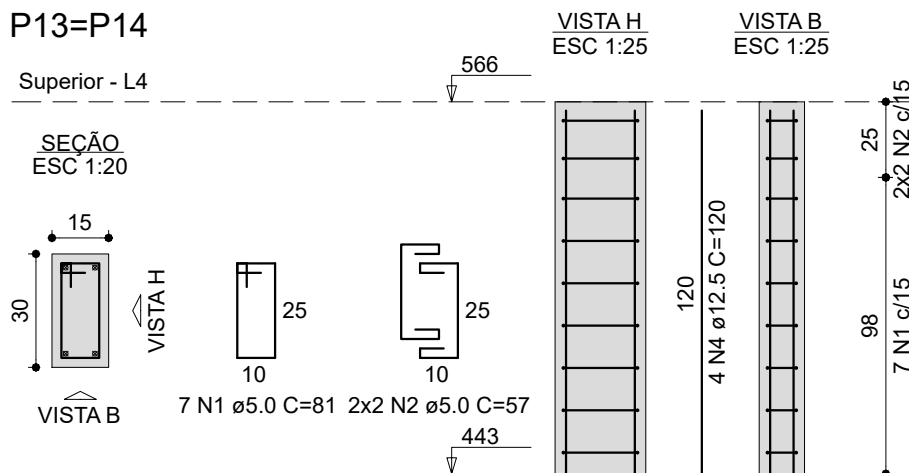
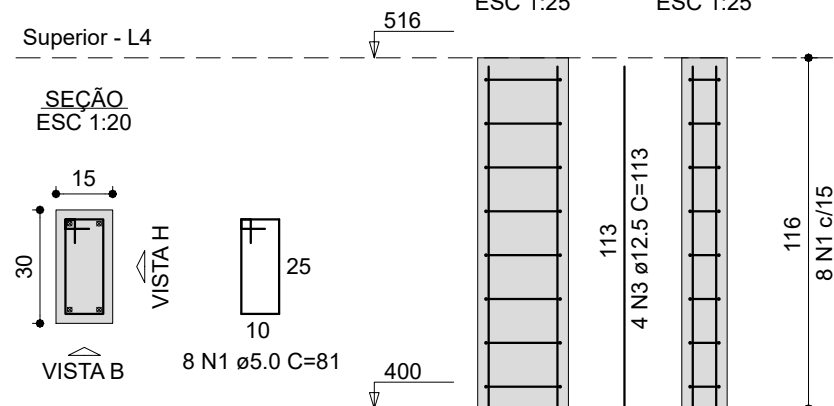
RESUMO DO AÇO

AÇO	DIAM (mm)	C.TOTAL (m)	PESO + 10% (kg)
CA50	10.0	20.8	14.1
	12.5	115.6	122.5
CA60	5.0	191.3	32.4
PESO TOTAL (kg)			
CA50		136.6	
CA60		32.4	

Volume de concreto (C-25) = 1.18 m³

Área de forma = 23.32 m²

DETALHE - PILARES SUPERIOR



RELAÇÃO DO AÇO

AÇO	N	DIAM (mm)	QUANT	C.UNIT (cm)	C.TOTAL (cm)
CA60	1	5.0	48	81	3888
	2	5.0	8	57	456
CA50	3	12.5	8	113	904
	4	12.5	16	120	1920

RESUMO DO AÇO

AÇO	DIAM (mm)	C.TOTAL (m)	PESO + 10% (kg)
CA50	12.5	28.2	29.9
CA60	5.0	43.4	7.4

PESO TOTAL (kg)

CA50 29.9

CA60 7.4

Volume de concreto (C-25) = 0.33 m³

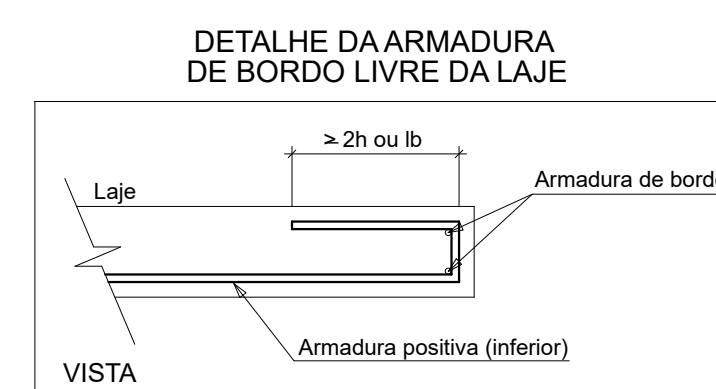
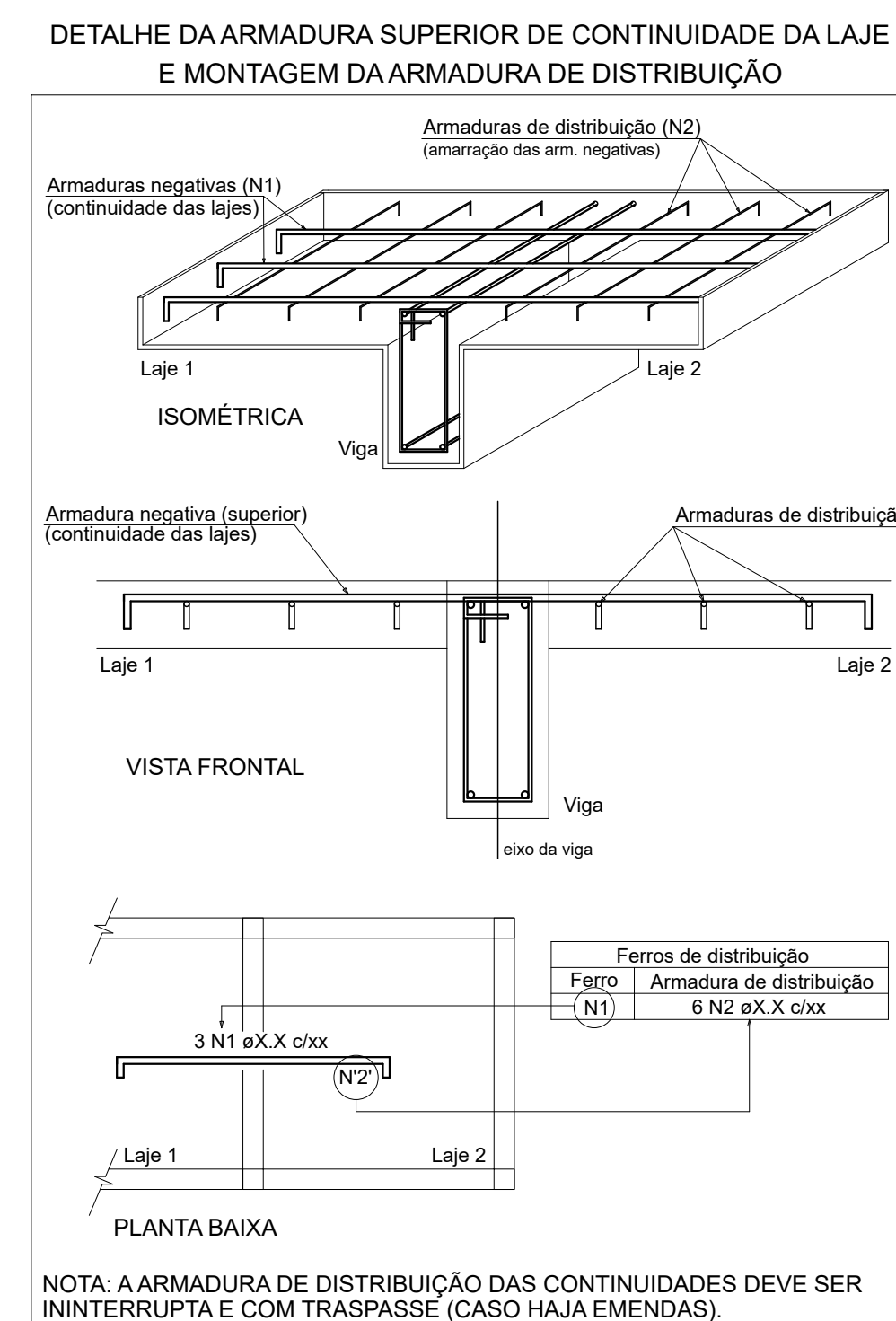
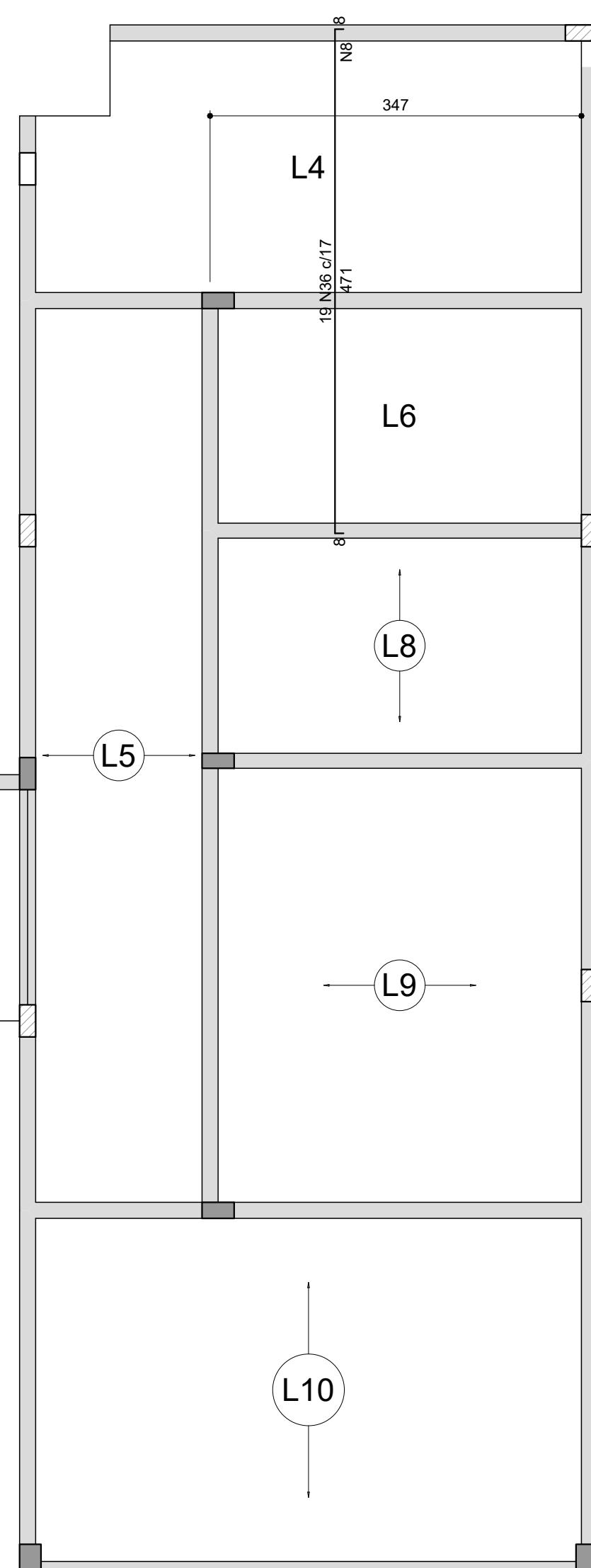
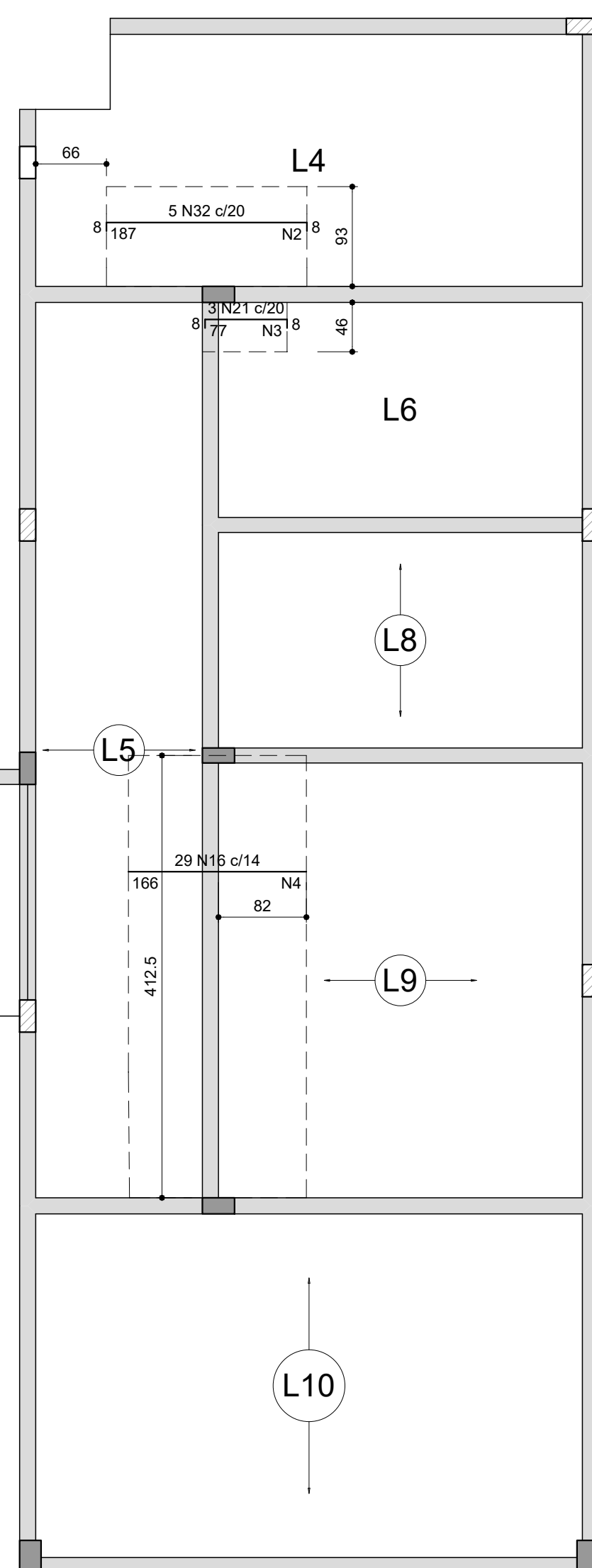
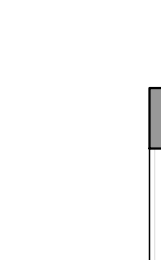
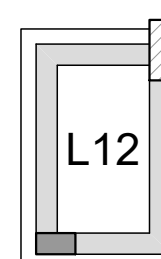
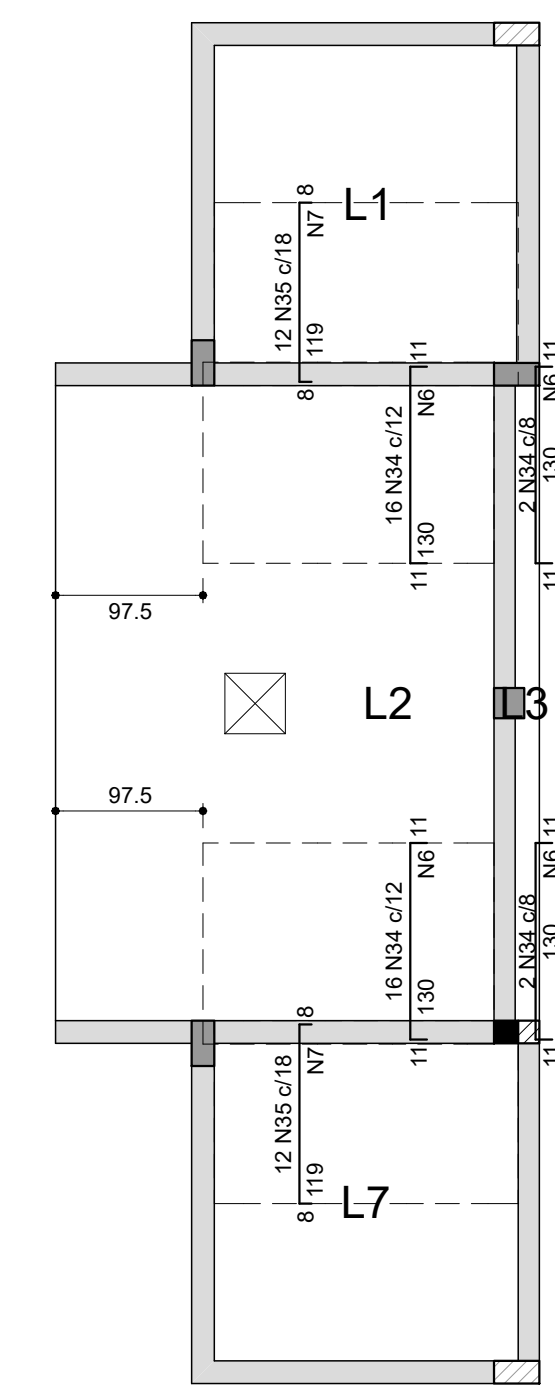
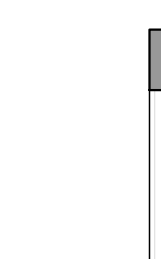
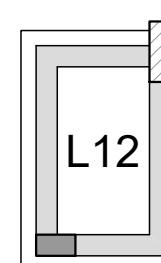
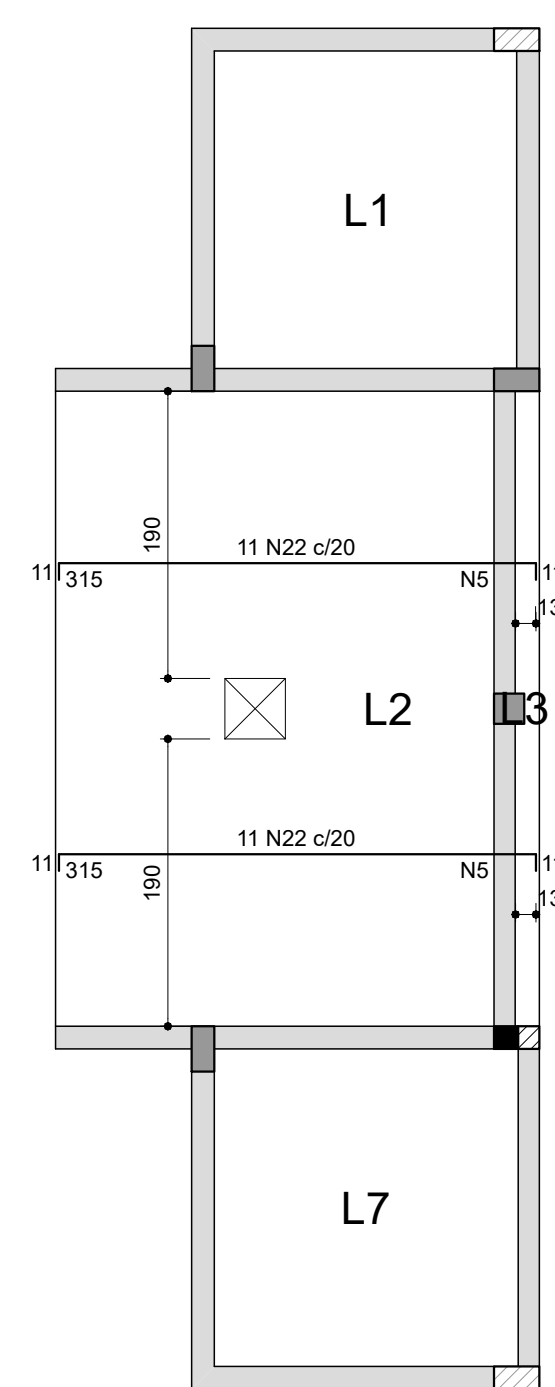
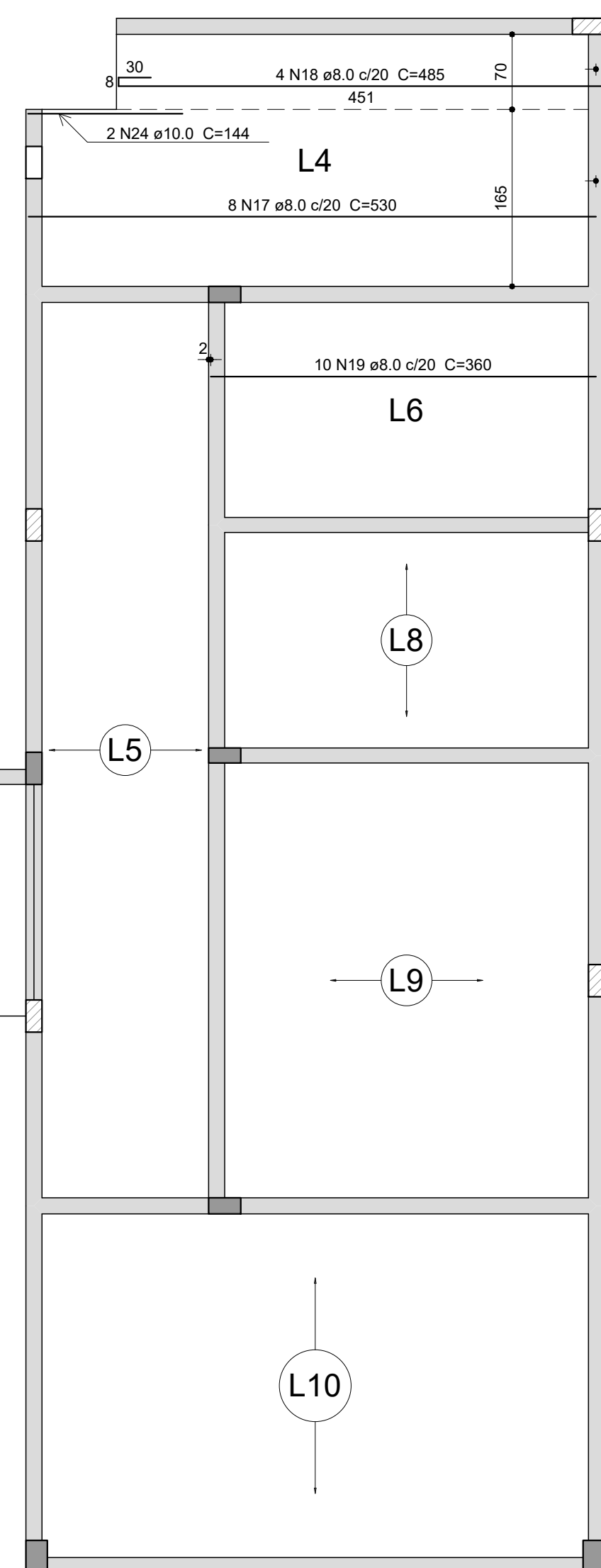
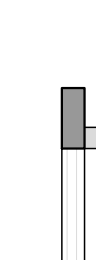
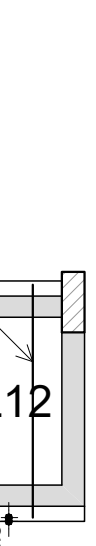
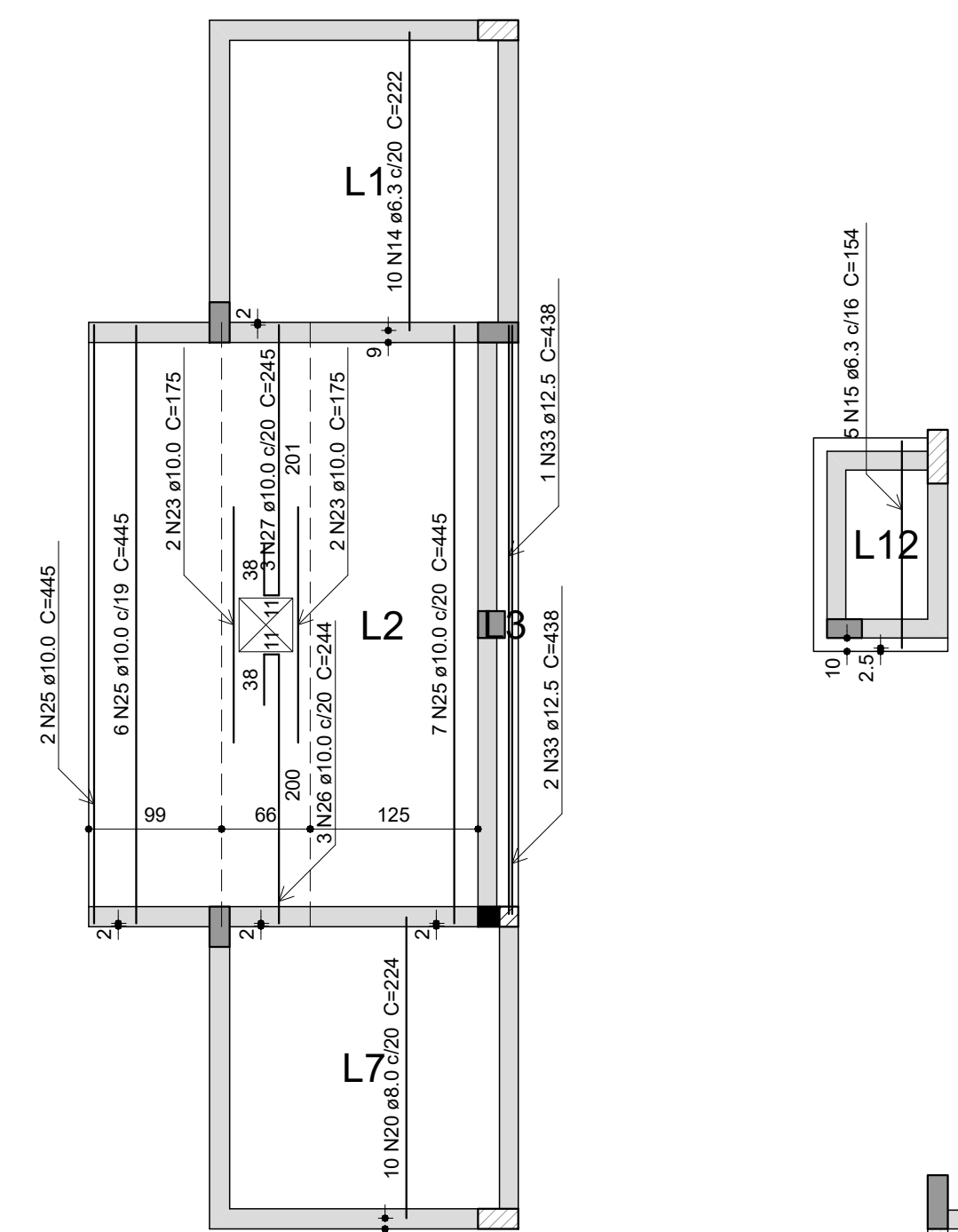
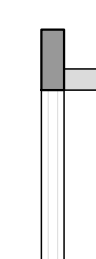
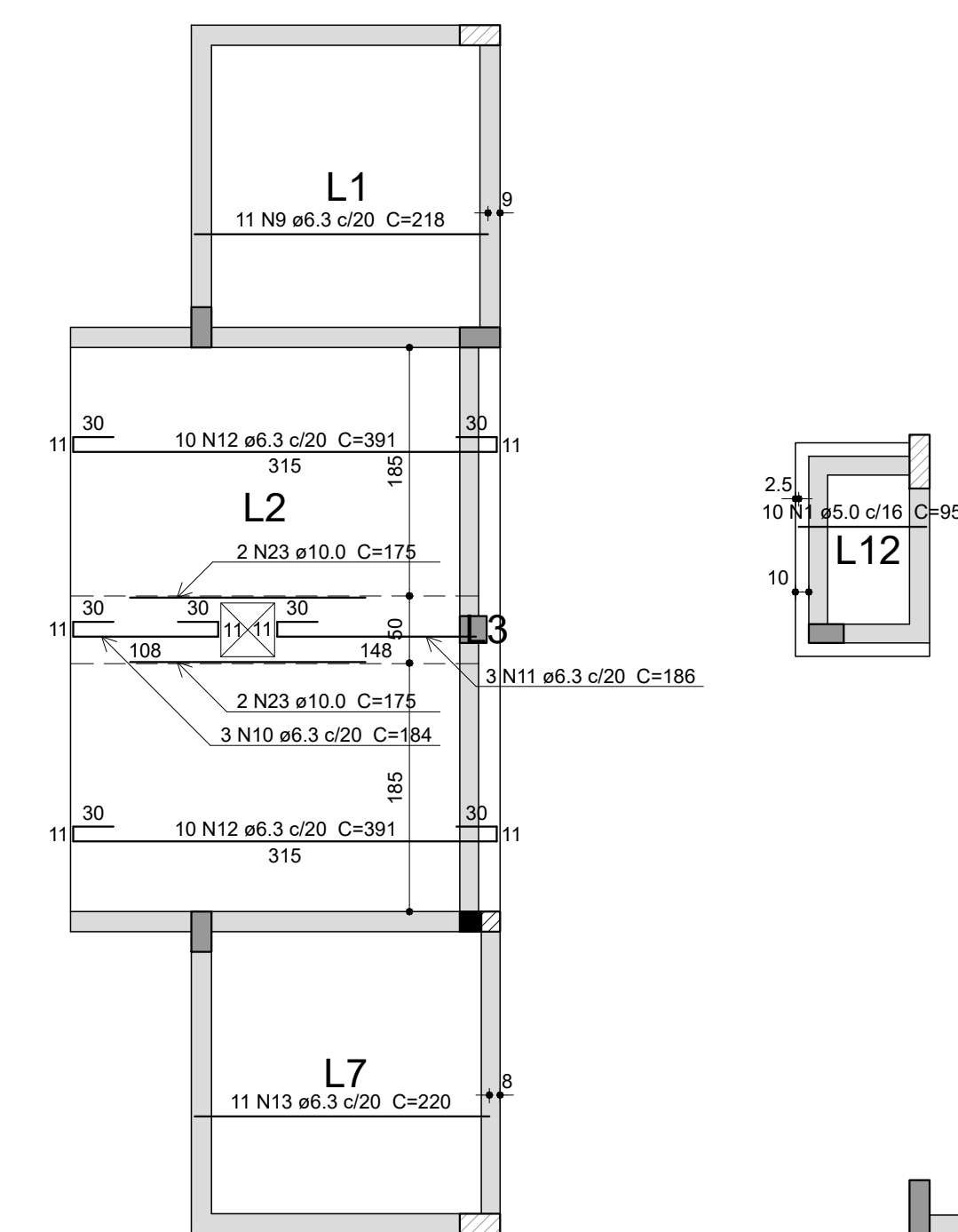
Área de forma = 6.52 m²



SECRETARIA ESPECIAL DE OBRAS	ARQ. URB. DIANE REGINA VALENTINI	CAUBR A51414.4
SECRETARIA DE OBRAS	ARQ. URB. DIANE REGINA VALENTINI	CAUBR A51414.4
FISCALIZAÇÃO DE OBRAS	ENG. CIV. FABIO ALEX ZENARO	CREA/RG 103121-3
CHARGE/COORDENADOR	ENG. ELETRO. MARCELO TOLESCATTI	CREA/RG 11851-1
CERRO LARGO/COORDENADOR	ENG. CIV. PAULO ROBERTO RENGES	CREA/RG 101012
ERECIM/COORDENADOR	ENG. CIV. CARLOS ROQUE SCHMIDT	CREA/RG 43169
LARANJEIRA DO SUL/COORDENADOR	ENG. CIV. JULIANA KIM CHIMELLO	CREA/RG 121366
REALEZ/COORDENADOR	ENG. CIV. FABIO ORETTA	CREA/RG 811610
	ENG. CIV. FABRÍCIO BALESTRIN	CREA/RG 121366

LOCAL: CHAPECÓ - SC	FASE: EXECUTIVO	ESCALA: 1:25 E 1:50
OBRA: CENTRO DE ACOLHIMENTO	REVISÃO Nº: R00	TAMANHO FOLHA: A1
PROJETO: ESTRUCTURAL	DATA: 07/10/2025	Nº PRANCHA: 11
CONTEÚDO: DETALHE - PILARES INTERMEDIÁRIO	DESENHADO POR: RODRIGO	EST 11
DETALHE - PILARES SUPERIOR	NOME DO ARQUIVO: CENTRO-ACOLHIMENTO_LUPPE_OB_F01_EST010	14
ENDEREÇO: RODOVIA SC 484, KM 02, FRONTEIRA SUL		





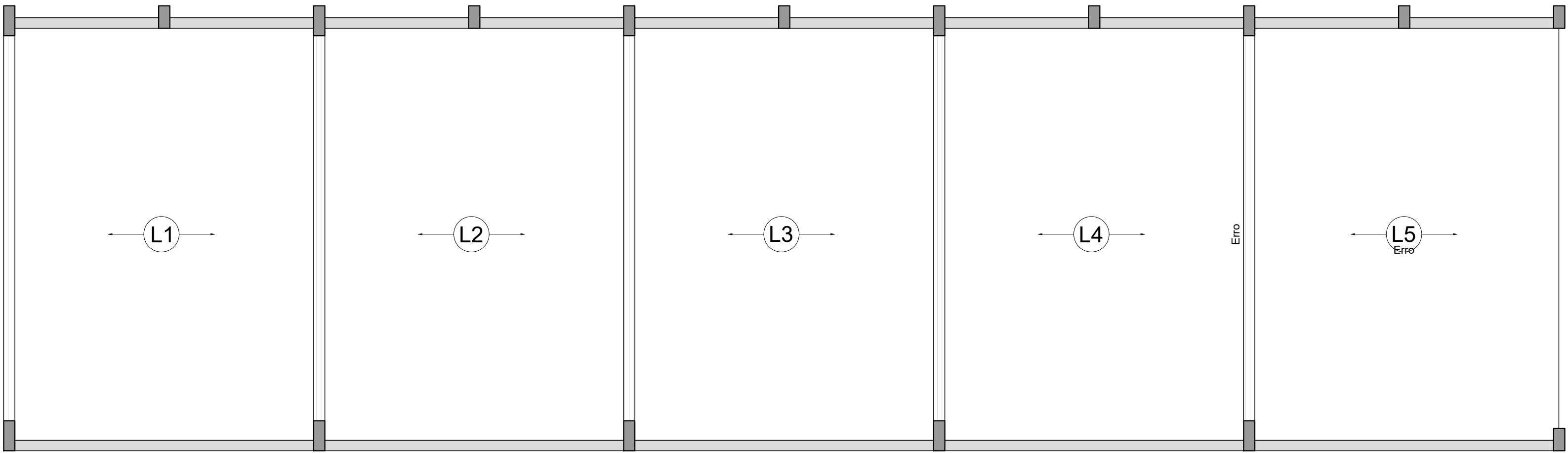
Armaduras de distribuição	
Armadura	Armadura de distribuição
N32	10 N2 ø5,0 c/20 C=93
N21	4 N3 ø5,0 c/20 C=46
N16	9 N4 ø5,0 c/20 C=405
N22	32 N5 ø5,0 c/20 C=190
N34	22 N6 ø5,0 c/20 C=222
N35	20 N7 ø5,0 c/20 C=201
N38	17 N8 ø5,0 c/20 C=347

Relatório do aço					
ACO	N	ESAM (mm)	CL (mm)	C TOTAL (mm)	
CASO	1	5,0	10	90	950
	2	5,0	10	93	900
	3	5,0	14	46	484
	4	5,0	9	405	3645
	5	5,0	32	100	1000
	6	5,0	20	222	484
	7	5,0	17	247	589
	8	6,3	11	216	232
	9	6,3	3	184	184
	11	6,3	3	185	585
	12	6,3	20	311	2020
	13	6,3	11	220	2420
	14	6,3	22	220	220
	15	6,3	5	154	770
	16	6,3	8	166	414
	17	8,0	9	330	4240
	18	8,0	24	445	445
	19	8,0	10	240	360
	20	8,0	10	224	2240
	21	8,0	22	333	7326
	22	8,0	3	89	89
	23	8,0	22	333	7326
	24	10,0	2	144	288
	25	10,0	16	146	6674
	26	10,0	3	244	732
	27	10,0	24	245	245
	28	10,0	29	261	7569
	29	10,0	29	271	1035
	30	10,0	2	145	290
	31	10,0	17	226	3642
	32	10,0	5	188	590
	33	12,5	3	438	1314
	34	12,5	36	166	4256
	35	12,5	24	229	4811

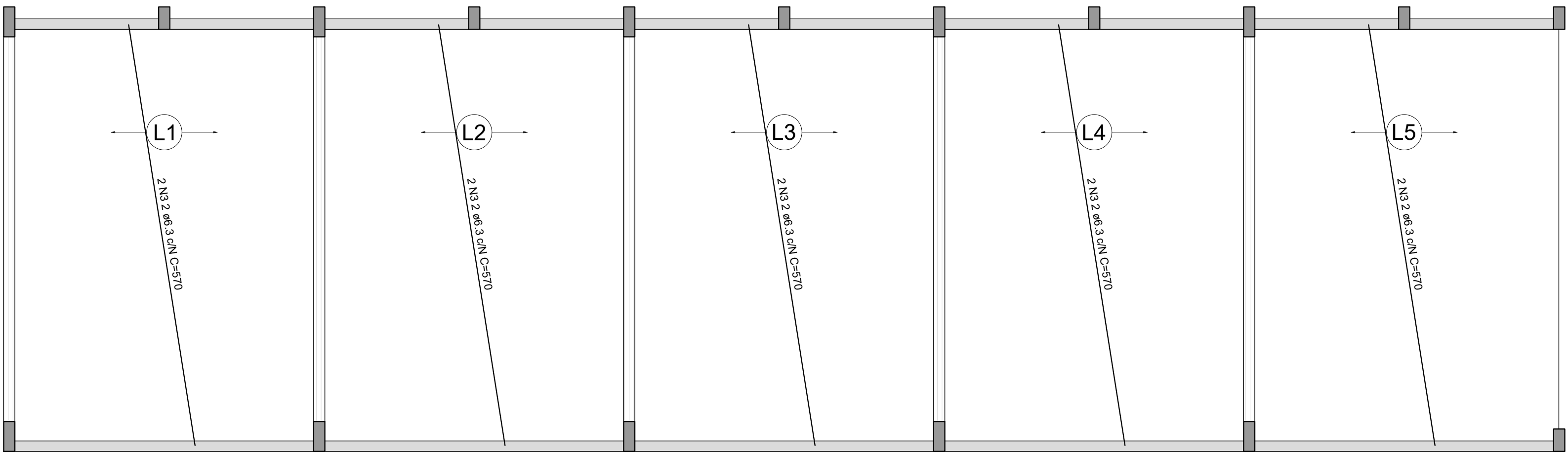
AÇO	DIAM (mm)	C.TOTAL (m)	PESO + 10% (kg)
CA50	6.3	215.5	60.2
	8.0	196.2	85.1
	10.0	236.1	160.1
	12.5	188.1	199.3
CA60	5.0	265.9	45
<b>PESO TOTAL (kg)</b> CA50 504.7 CA60 45			

Volume de concreto (C-25) = 7.80 m<sup>3</sup>  
 Área de forma = 41.79 m<sup>2</sup>

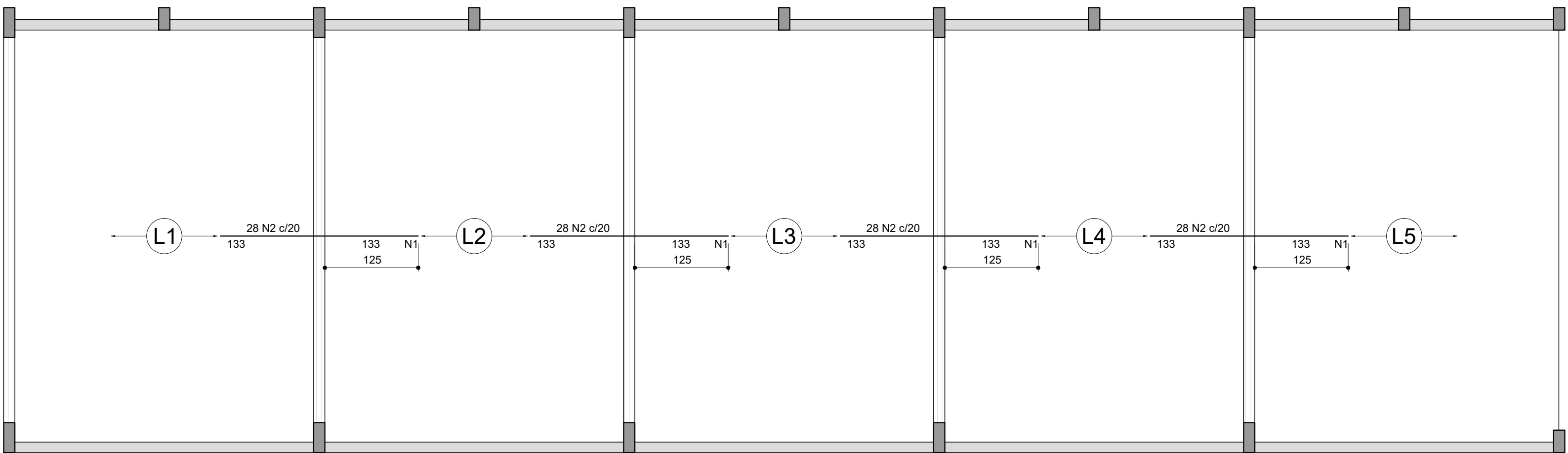




Armação positiva das lajes - Intermediário (Eixo X)  
escala 1:50

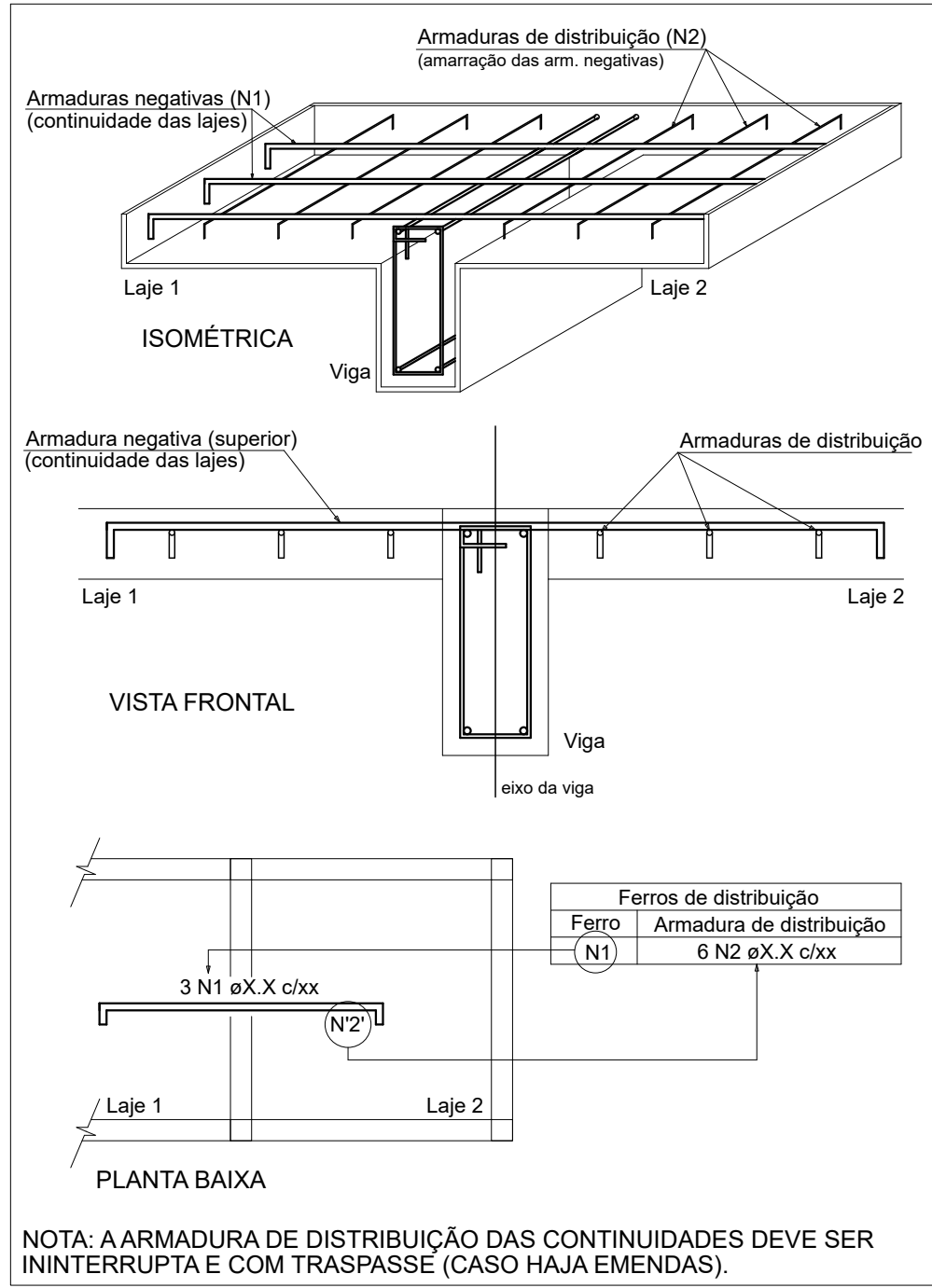


Armação positiva das lajes - Intermediário (Eixo Y)  
escala 1:50

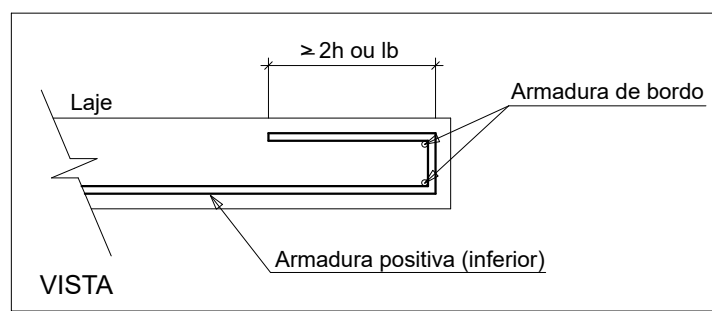


Armação negativa das lajes - Intermediário (Eixo X)  
escala 1:50

DETALHE DA ARMADURA SUPERIOR DE CONTINUIDADE DA LAJE  
E MONTAGEM DA ARMADURA DE DISTRIBUIÇÃO



DETALHE DA ARMADURA  
DE BORDO LIVRE DA LAJE



Armaduras de distribuição	
Armadura	Armadura de distribuição
N2	14 N1 ø5.0 c/20 C=565

RELAÇÃO DO AÇO

Negativos X-L3 NEGATIVOS X-L1 Positivos Y-L3  
POSITIVOS Y-L1

AÇO	N	DIAM (mm)	QUANT	C.UNIT (cm)	C.TOTAL (cm)
CA60	1	5.0	56	565	31640
CA50	2	6.3	112	266	29792
	3	6.3	10	570	5700

RESUMO DO AÇO

AÇO	DIAM (mm)	C.TOTAL (m)	PESO + 10% (kg)
CA50	6.3	354.9	95.5
CA60	5.0	316.4	53.6
PESO TOTAL (kg)			
CA50	95.5		
CA60	53.6		

Volume de concreto (C-25) = 7.07 m³  
Volume de concreto (I) = 0.00 m³  
Área de forma = 0.00 m²



Secretaria Especial de Obras



DESENVOLVIMENTO E SUSTENTABILIDADE

SECRETARIA ESPECIAL DE OBRAS

SECRETARIA DE OBRAS

ARQ. URB. DIANE REGINA VALENTINI

CAURB A51414.4

CAURB A51414.4

CAURB A51414.4

SECRETARIA ESPECIAL DE OBRAS

SECRETARIA DE OBRAS

ARQ. URB. DIANE REGINA VALENTINI

CAURB A51414.4

CAURB A51414.4

CAURB A51414.4

SECRETARIA ESPECIAL DE OBRAS

SECRETARIA DE OBRAS

ARQ. URB. DIANE REGINA VALENTINI

CAURB A51414.4

CAURB A51414.4

CAURB A51414.4

SECRETARIA ESPECIAL DE OBRAS

SECRETARIA DE OBRAS

ARQ. URB. DIANE REGINA VALENTINI

CAURB A51414.4

CAURB A51414.4

CAURB A51414.4

LOCAL: CHAPECÓ - SC	FASE: EXECUTIVO	ESCALA: 1:50
OBRA: CENTRO DE ACOLHIMENTO	REVISÃO Nº: R00	TAMANHO FOLHA: A1
PROJETO: ESTRUTURAL	DATA: 07/10/2025	Nº PRANCHA: 13
CONTEÚDO: DETALHE - LAJES INTERMEDIÁRIO	DESENHADO POR: RODRIGO	14
ENDEREÇO: RODOVIA SC 484, KM 02, FRONTEIRA SUL	NOME DO ARQUIVO: CENTRO-ACOLHIMENTO_LF03_OH_FE_EST003	



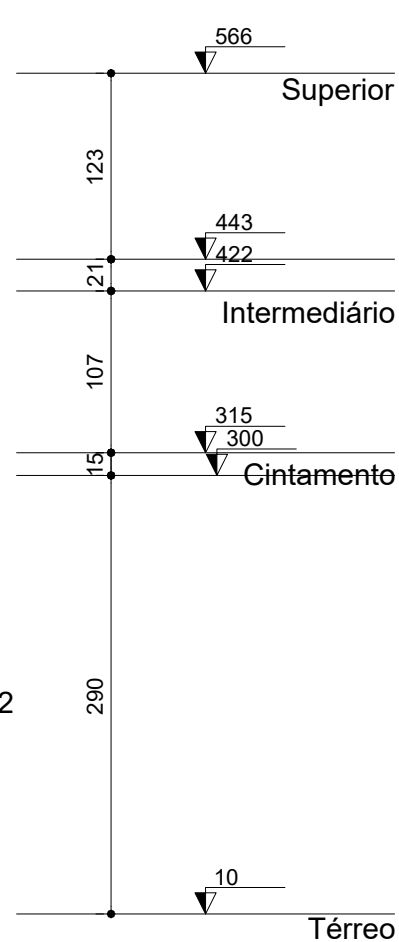
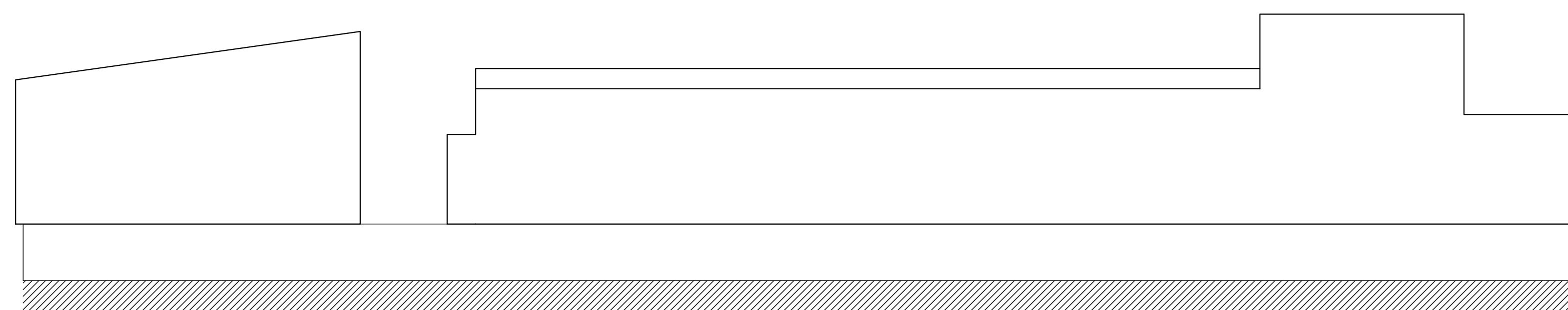
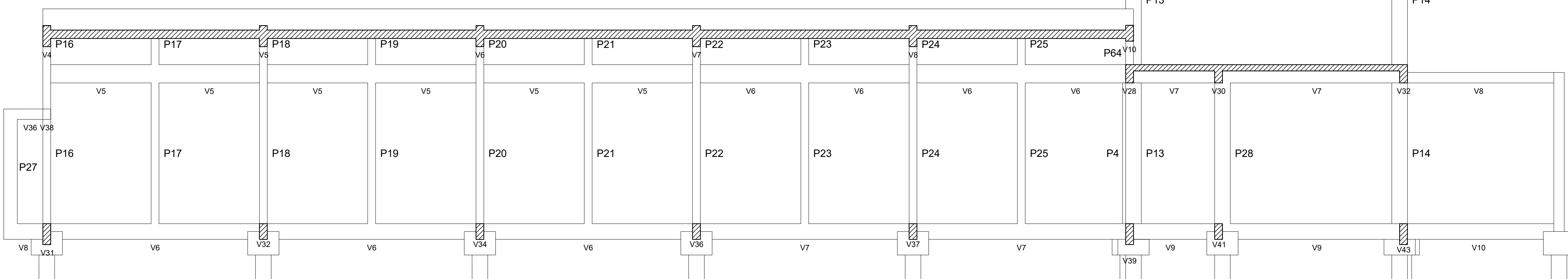


Diagrama de perfil longitudinal de la Vía 17. El eje vertical muestra elevaciones y distancias:

- Punto Superior: 566
- Punto intermediário: 422
- Punto Cintamento: 315
- Punto Térreo: 10
- Punto V17: -5
- Distancias: 144 (entre 566 y 422), 107 (entre 422 y 315), 305 (entre 315 y -5).



Nível	Nível de Dificuldade	Valor
1	Terreo	10
2	Cintamento	315
3	Intermediário	107
4	Superior	566





**Projeto Nº ITEM 2 - PROJETO ESTRUTURAL\_CH\_1-14/2025 - DAADM (10.55.01)**  
**(Nº do Documento: 41)**

**(Nº do Protocolo: NÃO PROTOCOLADO)**

**(Assinado digitalmente em 10/10/2025 07:25 )**

**FABRICIO BALESTRIN**  
SECRETARIO(A) - TITULAR  
SEO (10.55)  
Matrícula: ###730#5

**(Assinado digitalmente em 10/10/2025 19:03 )**

**RODRIGO EMMER**  
ENGENHEIRO-AREA  
DPA (10.55.04)  
Matrícula: ###708#2

Visualize o documento original em <https://sipac.uffrs.edu.br/public/documentos/index.jsp> informando seu número: **41**  
, ano: **2025**, tipo: **Projeto**, data de emissão: **09/10/2025** e o código de verificação: **17ddc8d697**